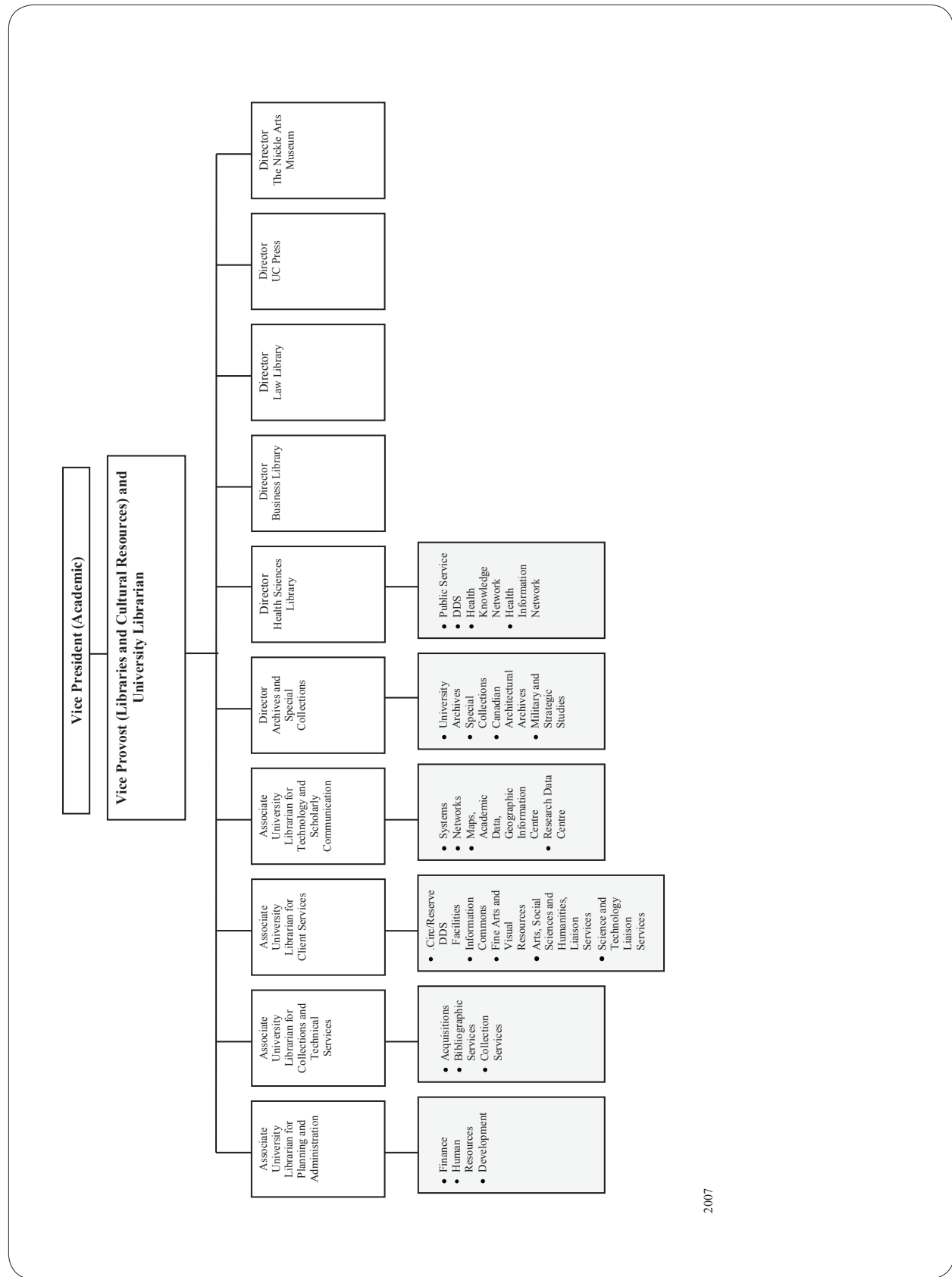
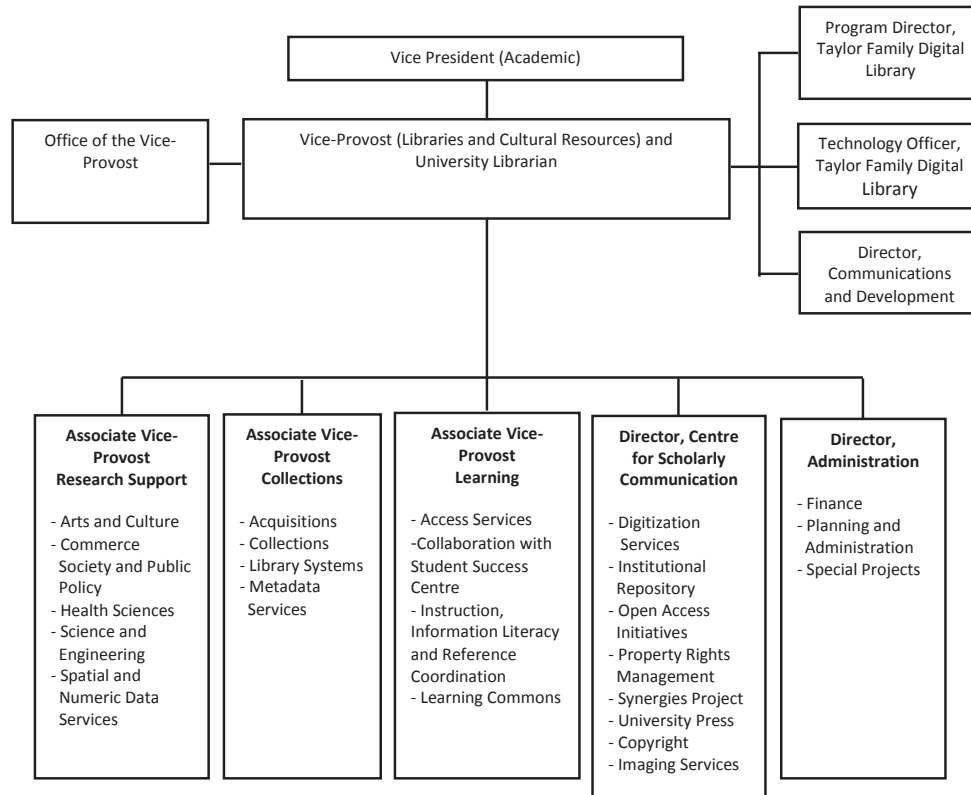
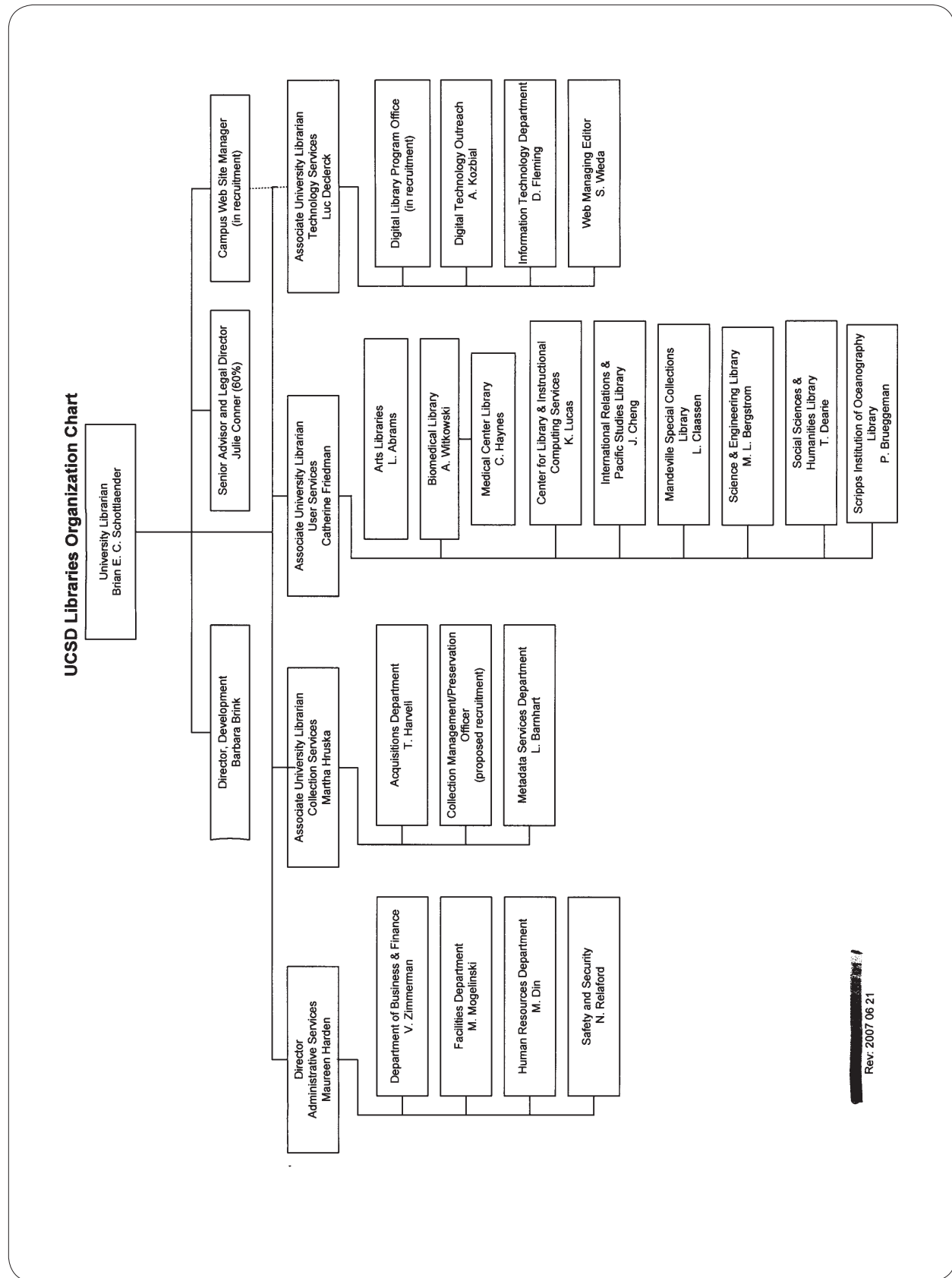


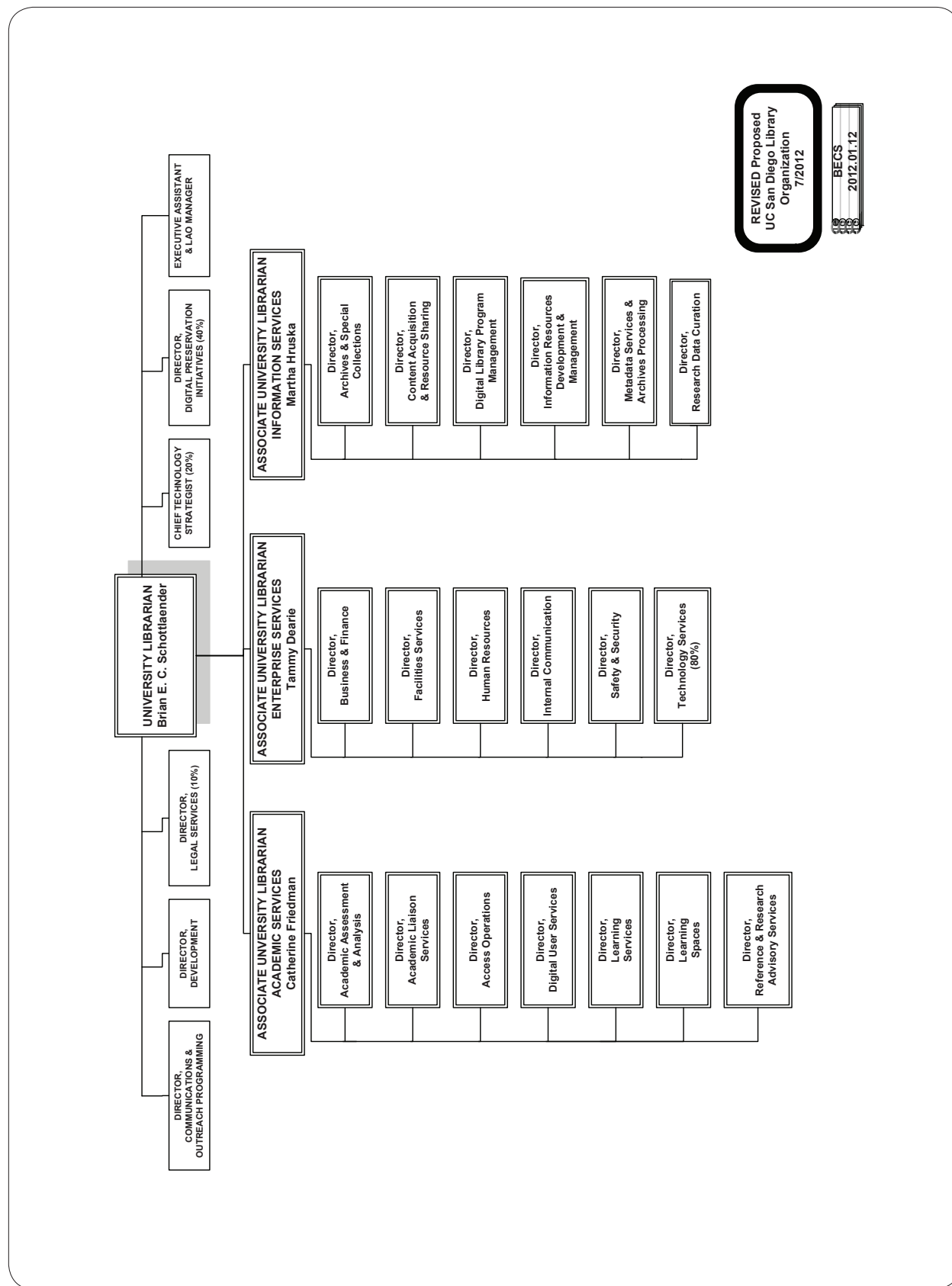
Organization Charts







Rev. 2007 06 21

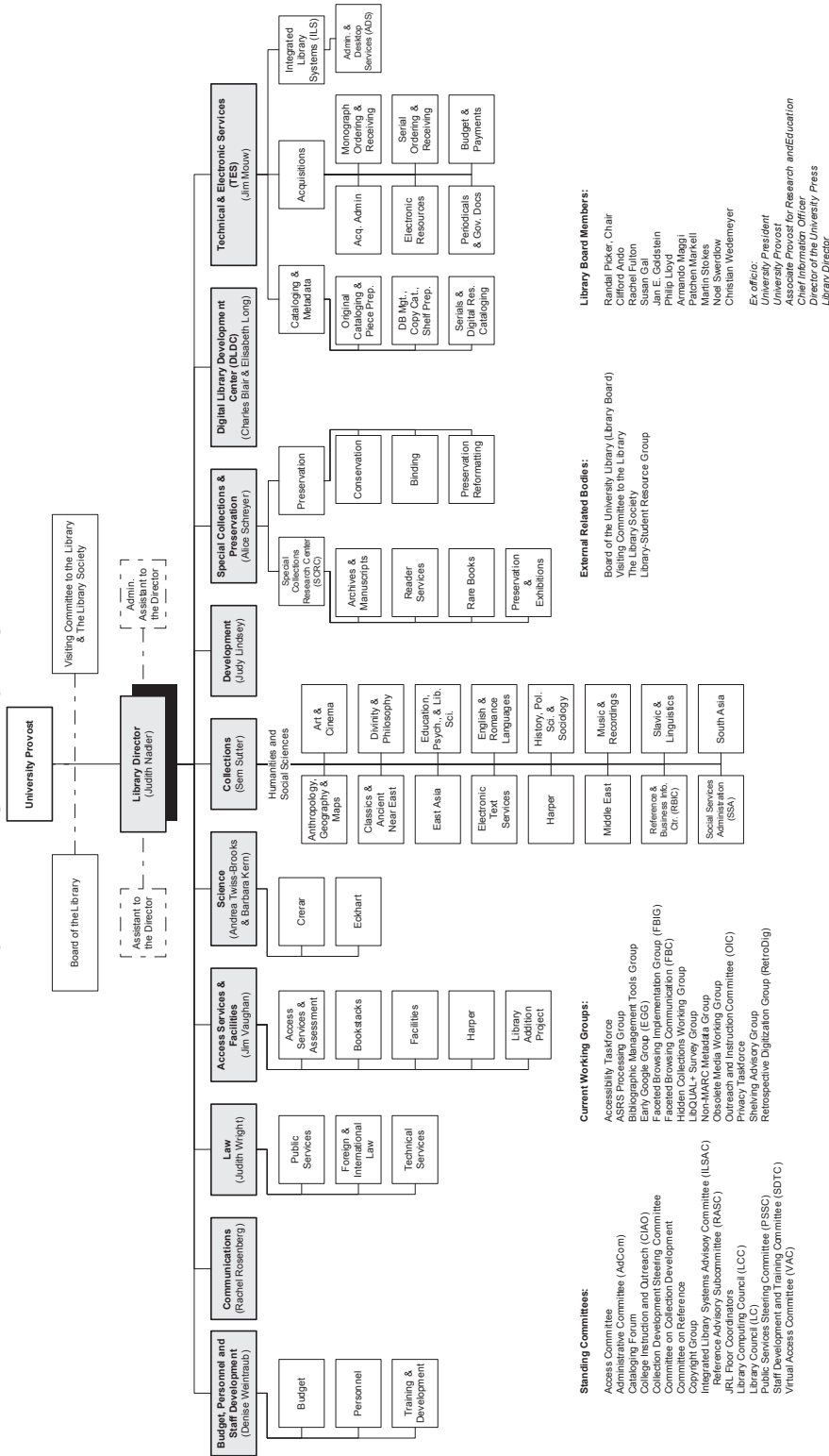


REVISED Proposed
UC San Diego Library
Organization
7/2012

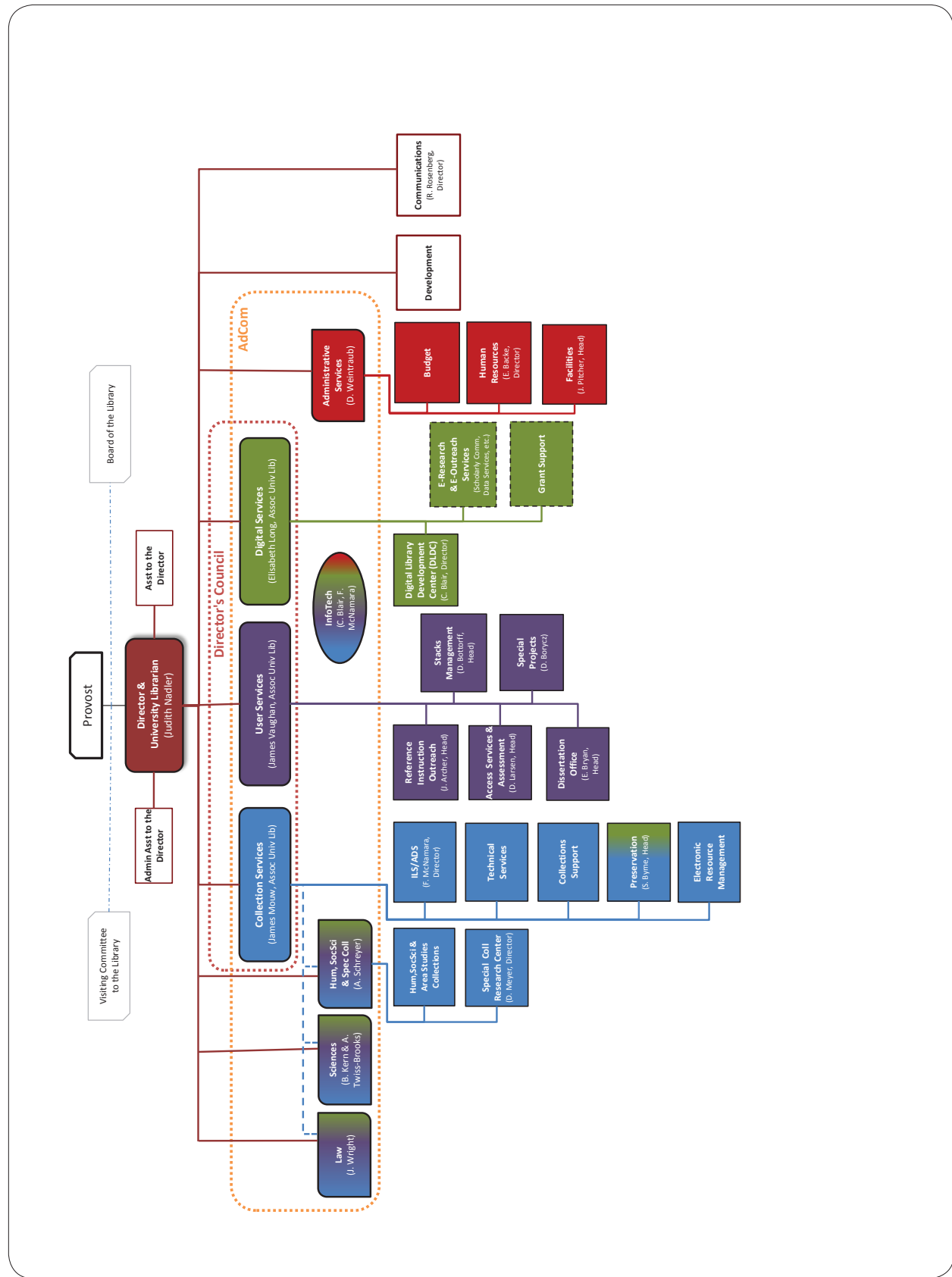
UCSD
LIBRARIES
2012.01.12

last revised 10/2007

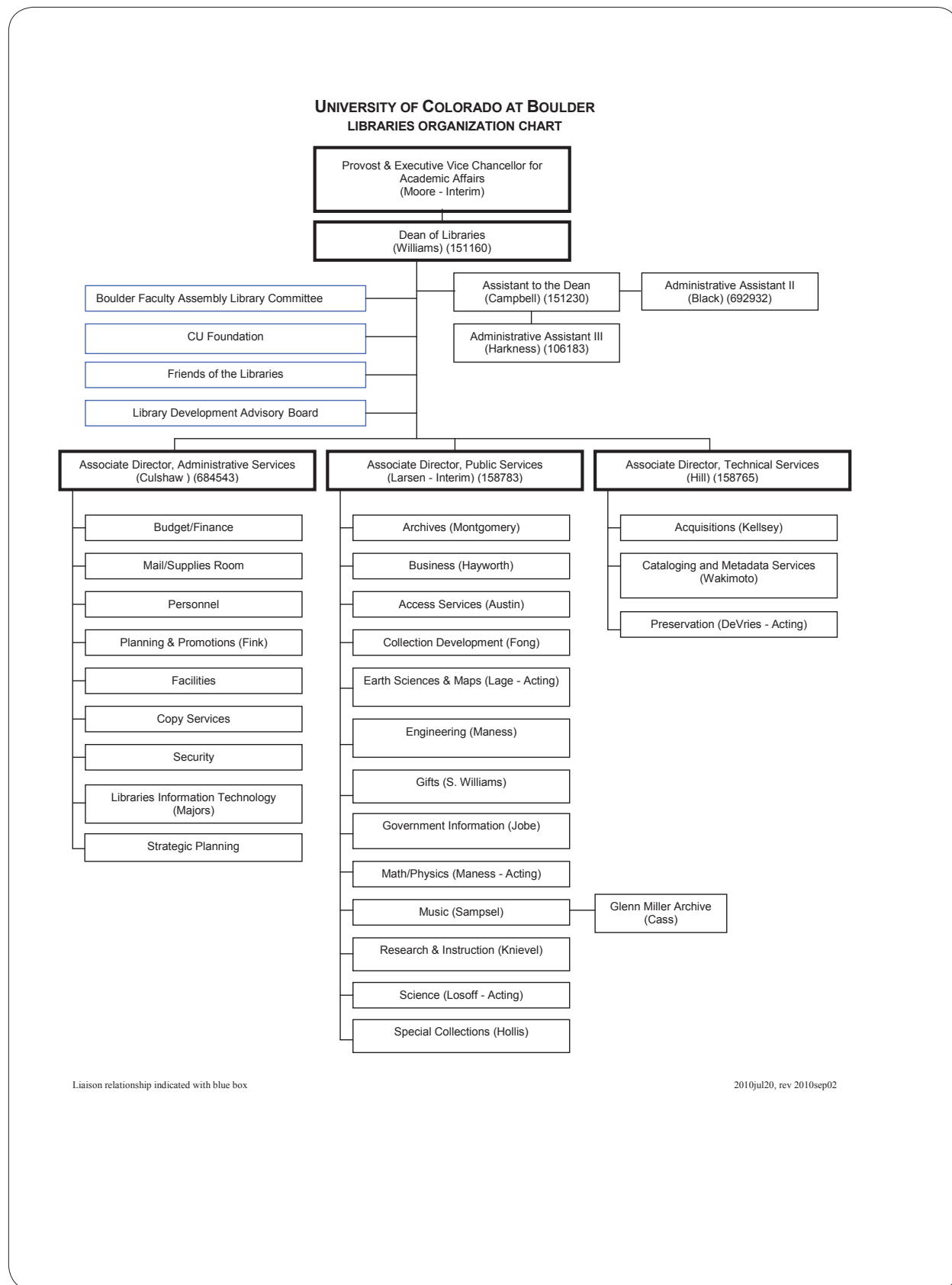
The University of Chicago Library Organizational Chart



UNIVERSITY OF CHICAGO
2012 organization chart

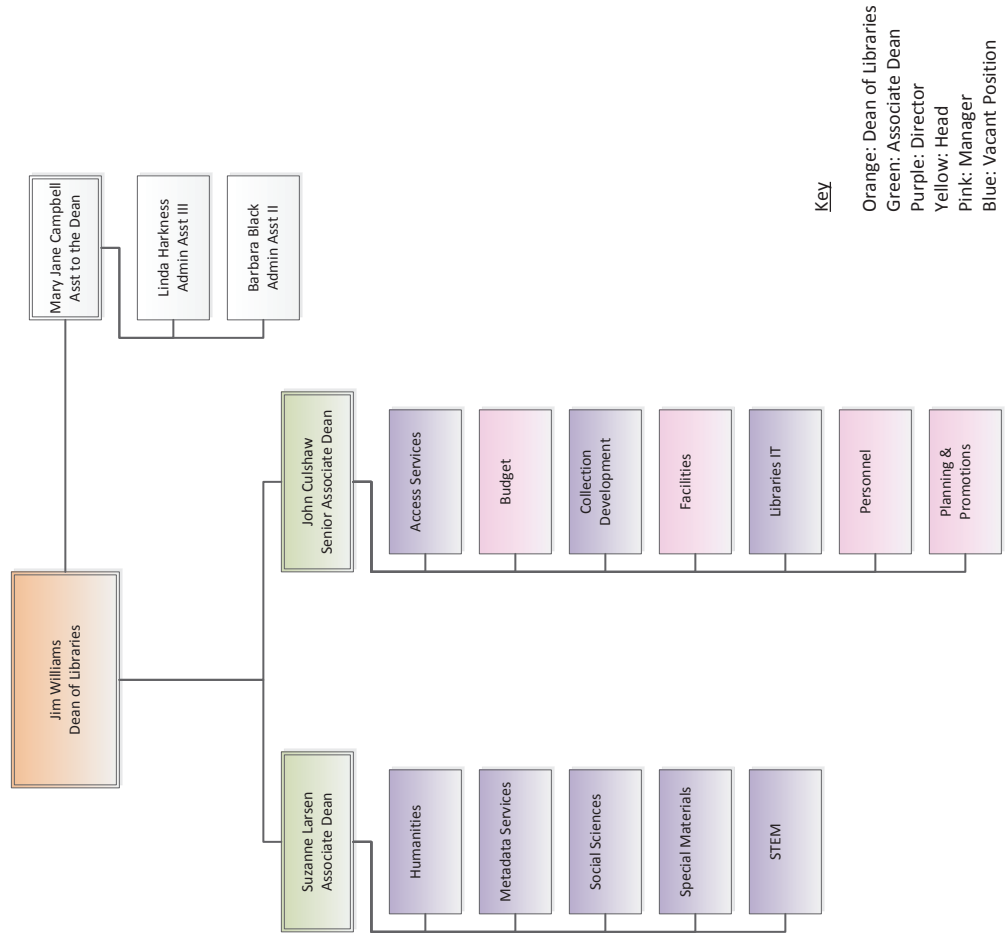


UNIVERSITY OF COLORADO AT BOULDER
2010 organization chart

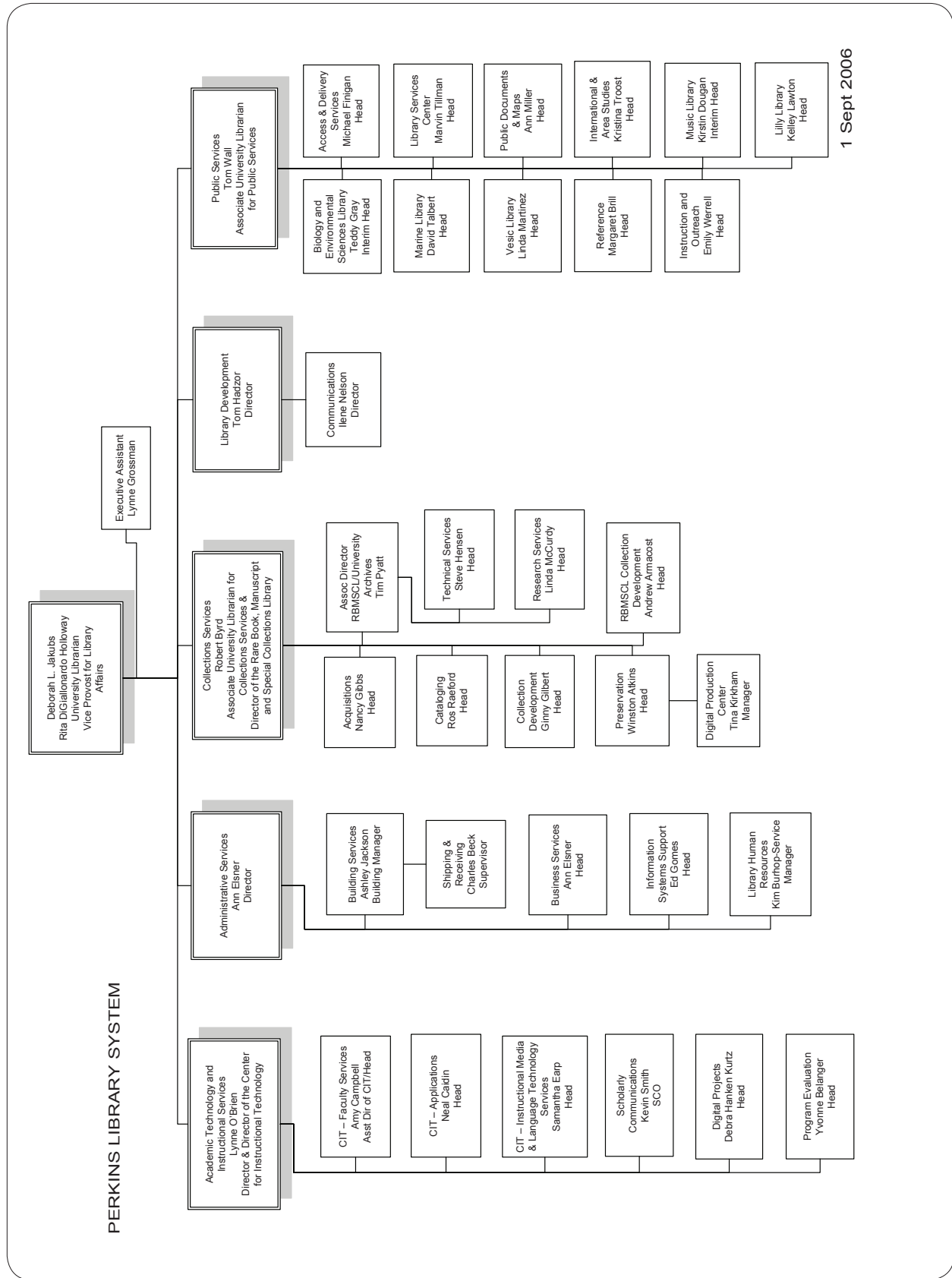


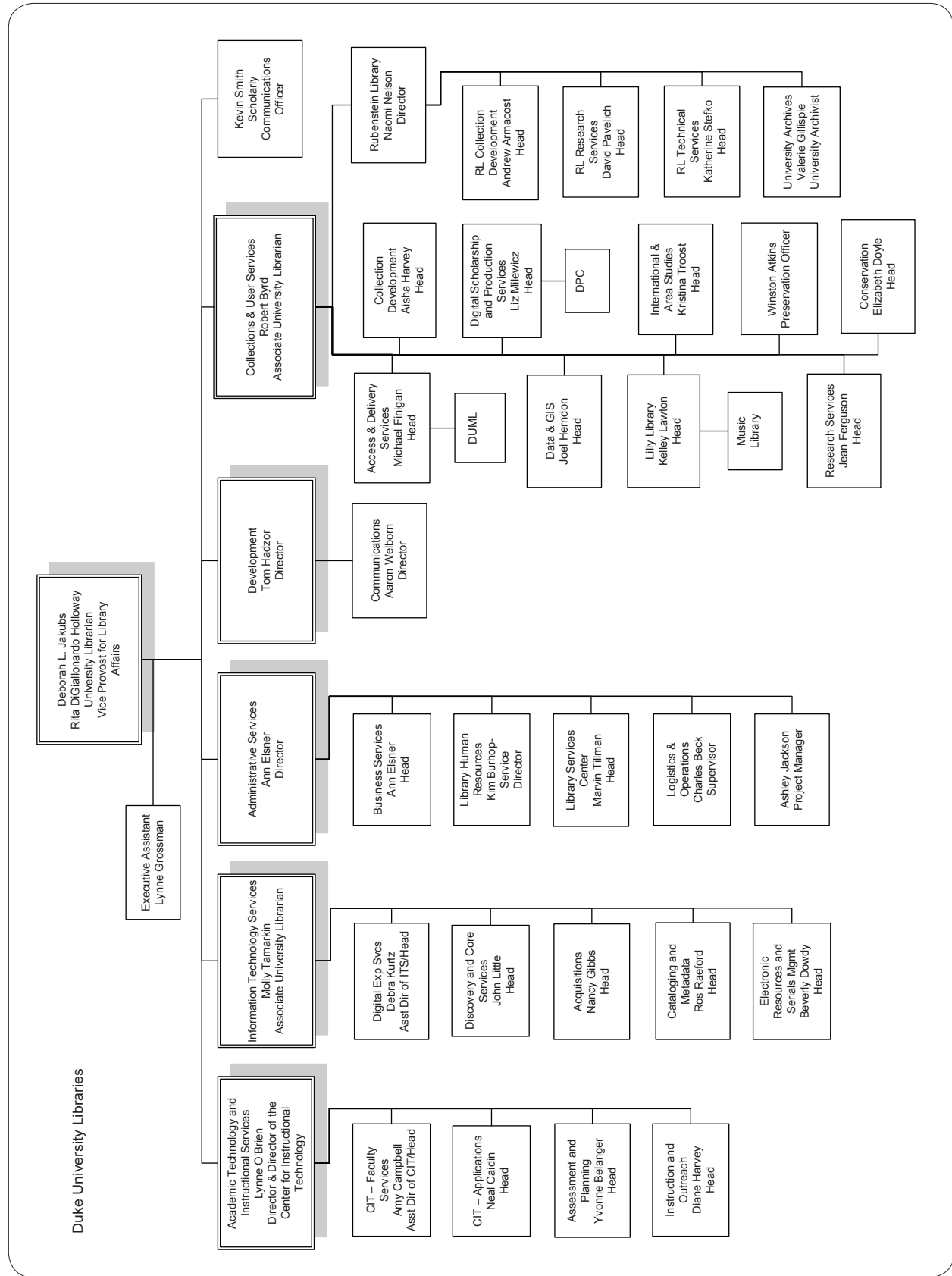
Libraries Overview

4/2/2012



DUKE UNIVERSITY
2007 organization chart

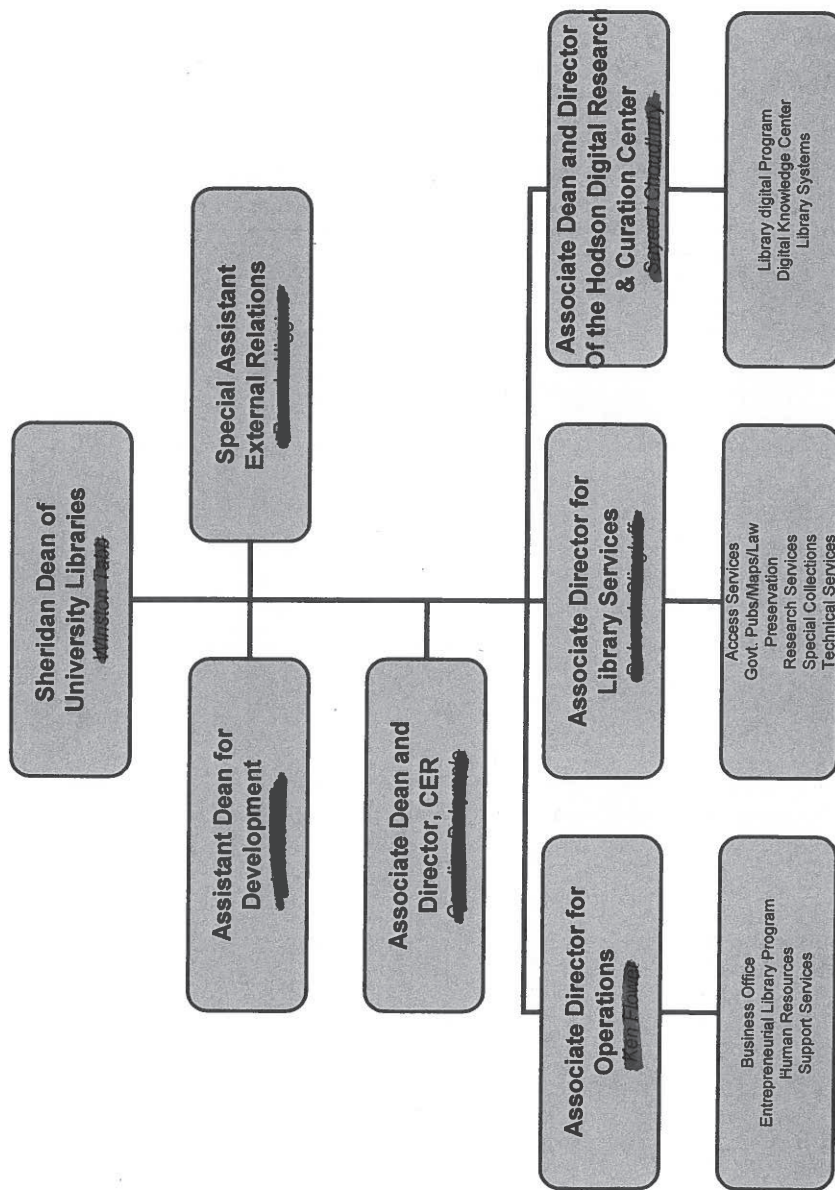




2007



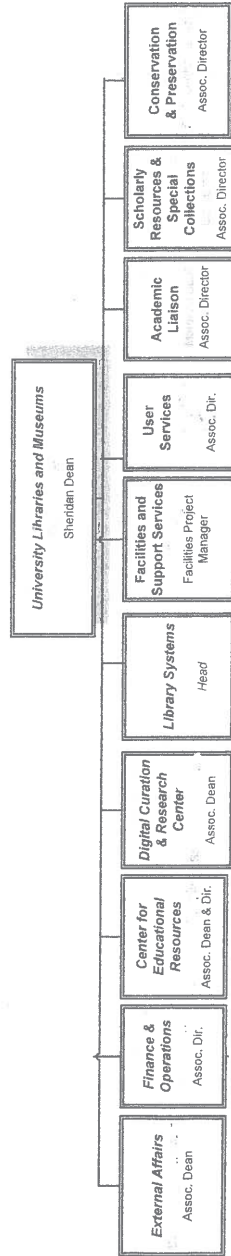
JOHNS HOPKINS UNIVERSITY LIBRARIES
KNOWLEDGE • SERVICE • INNOVATION



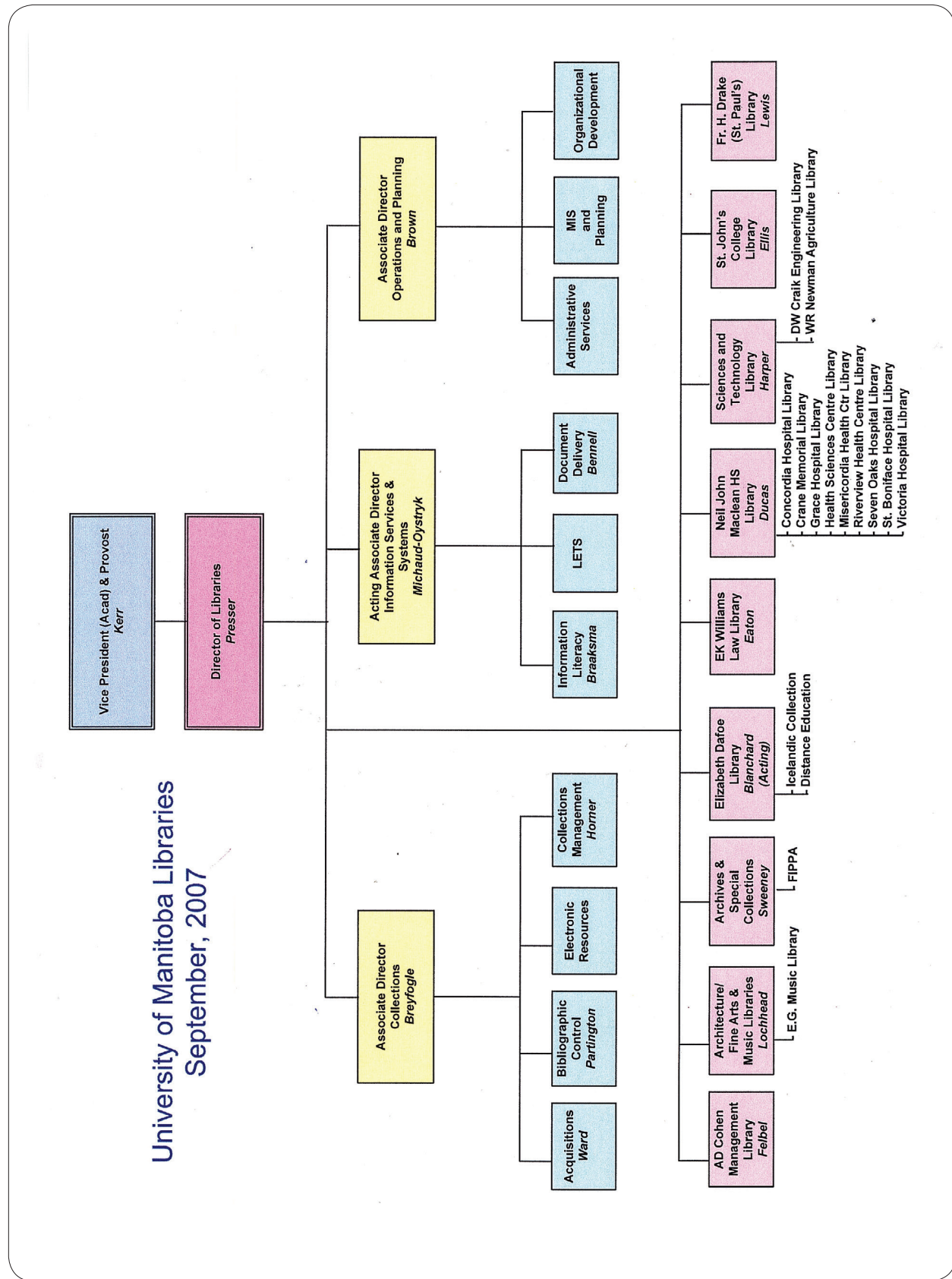
The Sheridan Libraries encompass the Milton S. Eisenhower Library and its collections at the Albert D. Hutzler Reading Room, John Work Garrett Library and the George Peabody Library at Mt. Vernon Place.

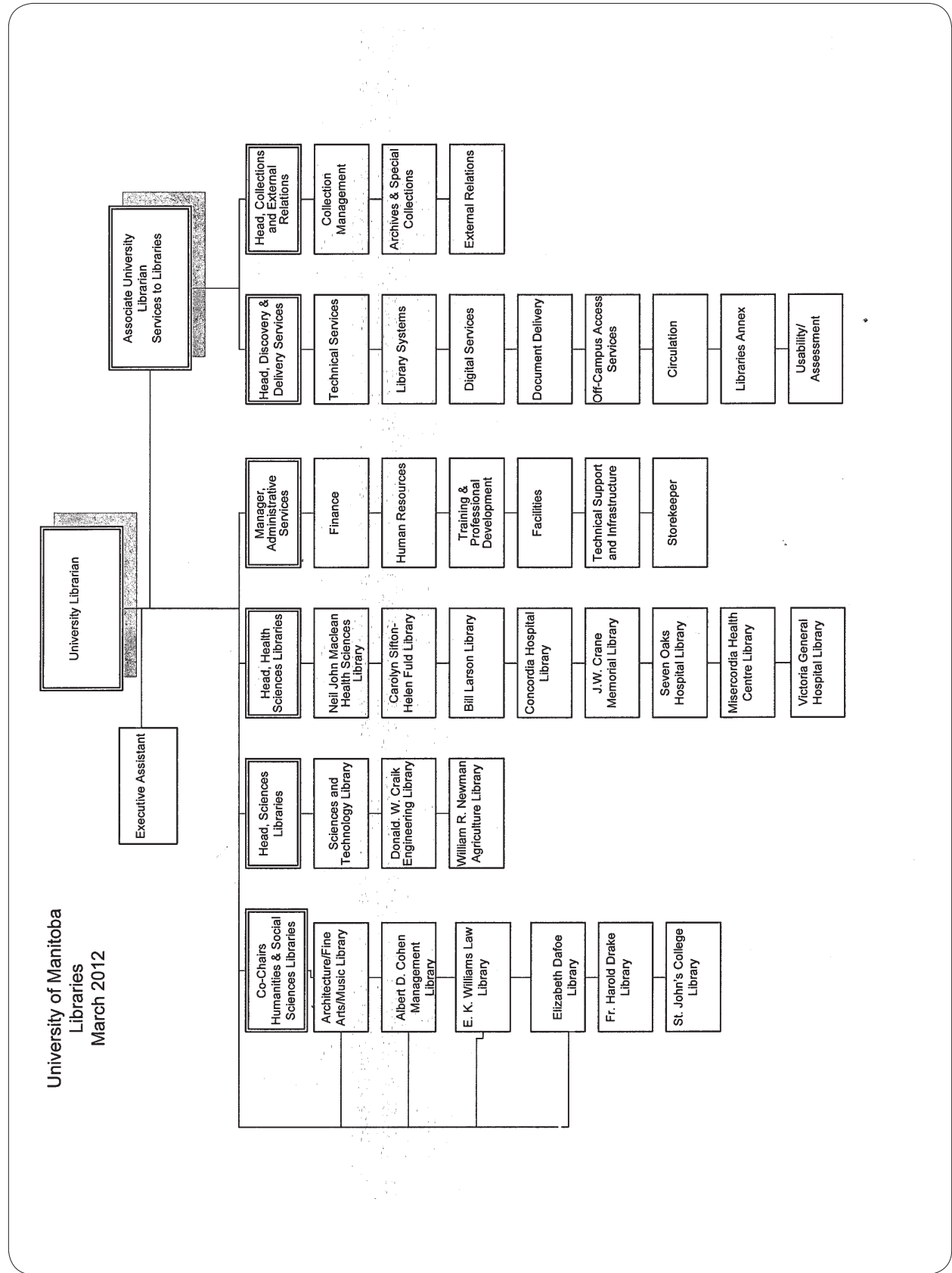
2012

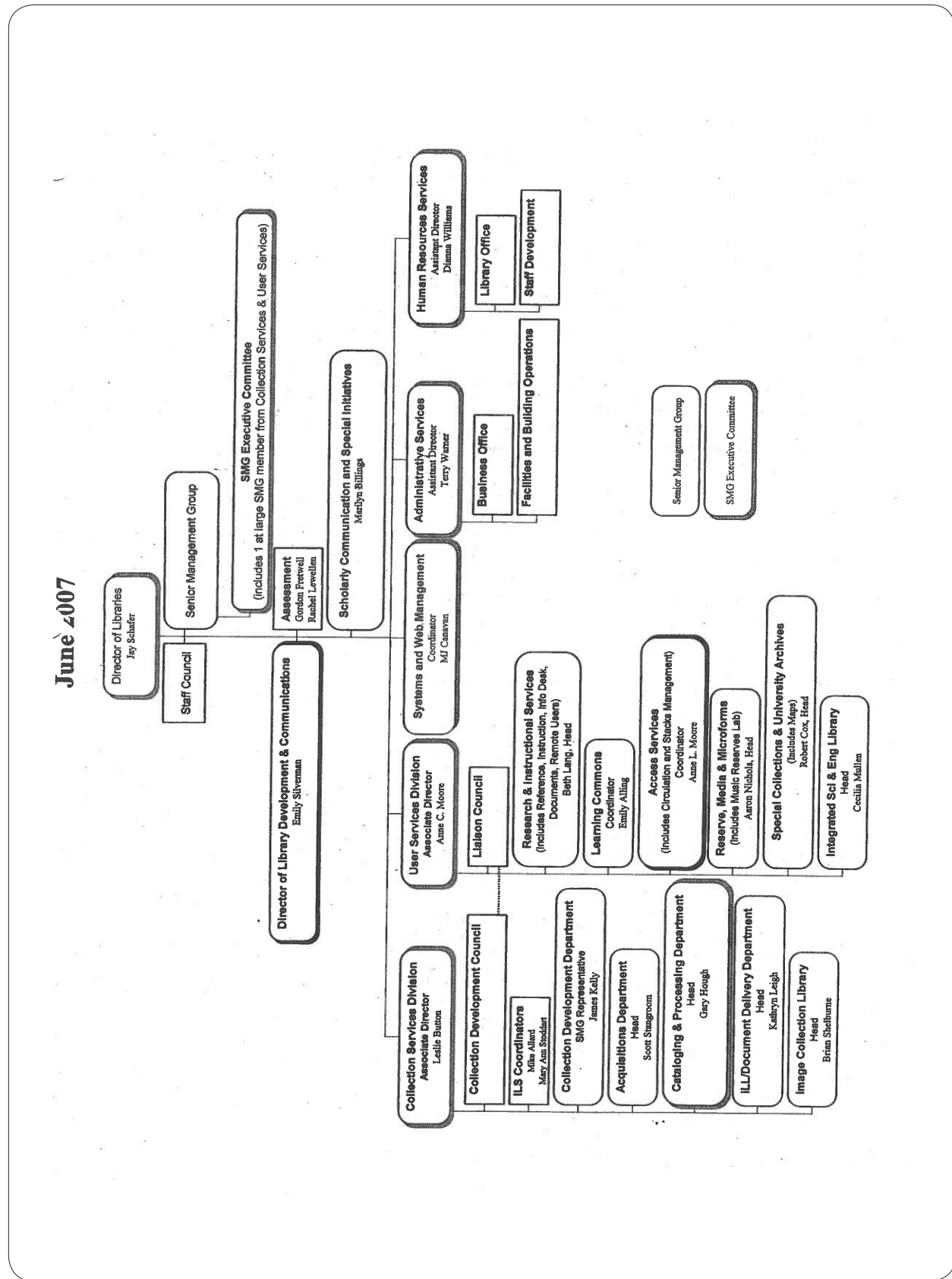
Johns Hopkins University Libraries and Museums



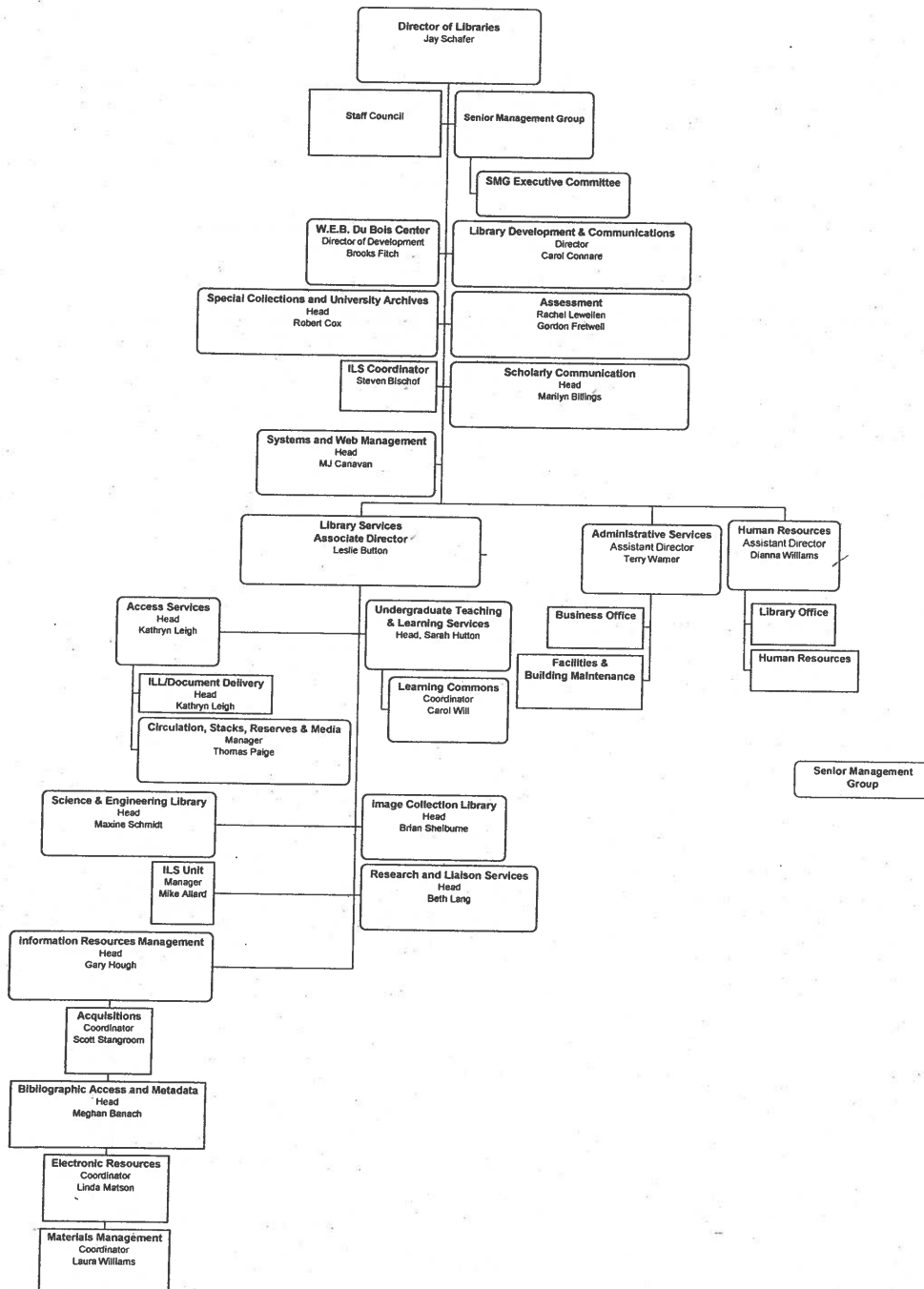
Effective 12/08/11







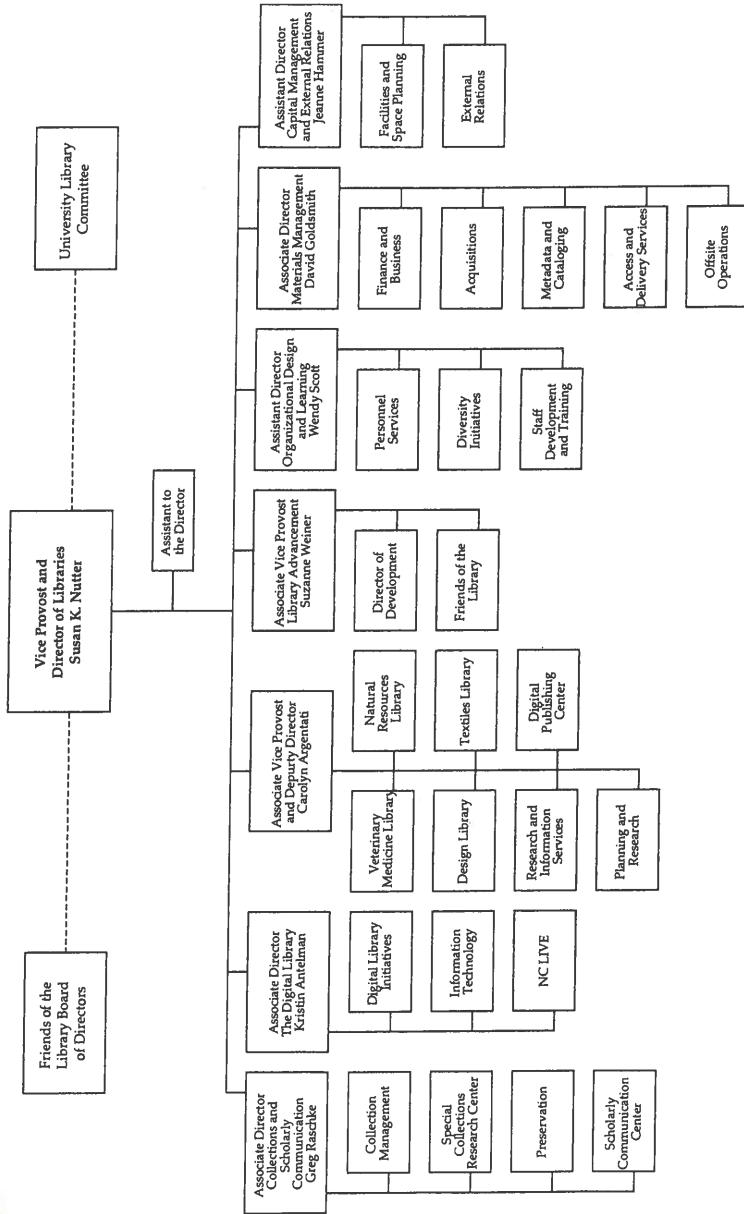
UMass Amherst Libraries Organization June 2011



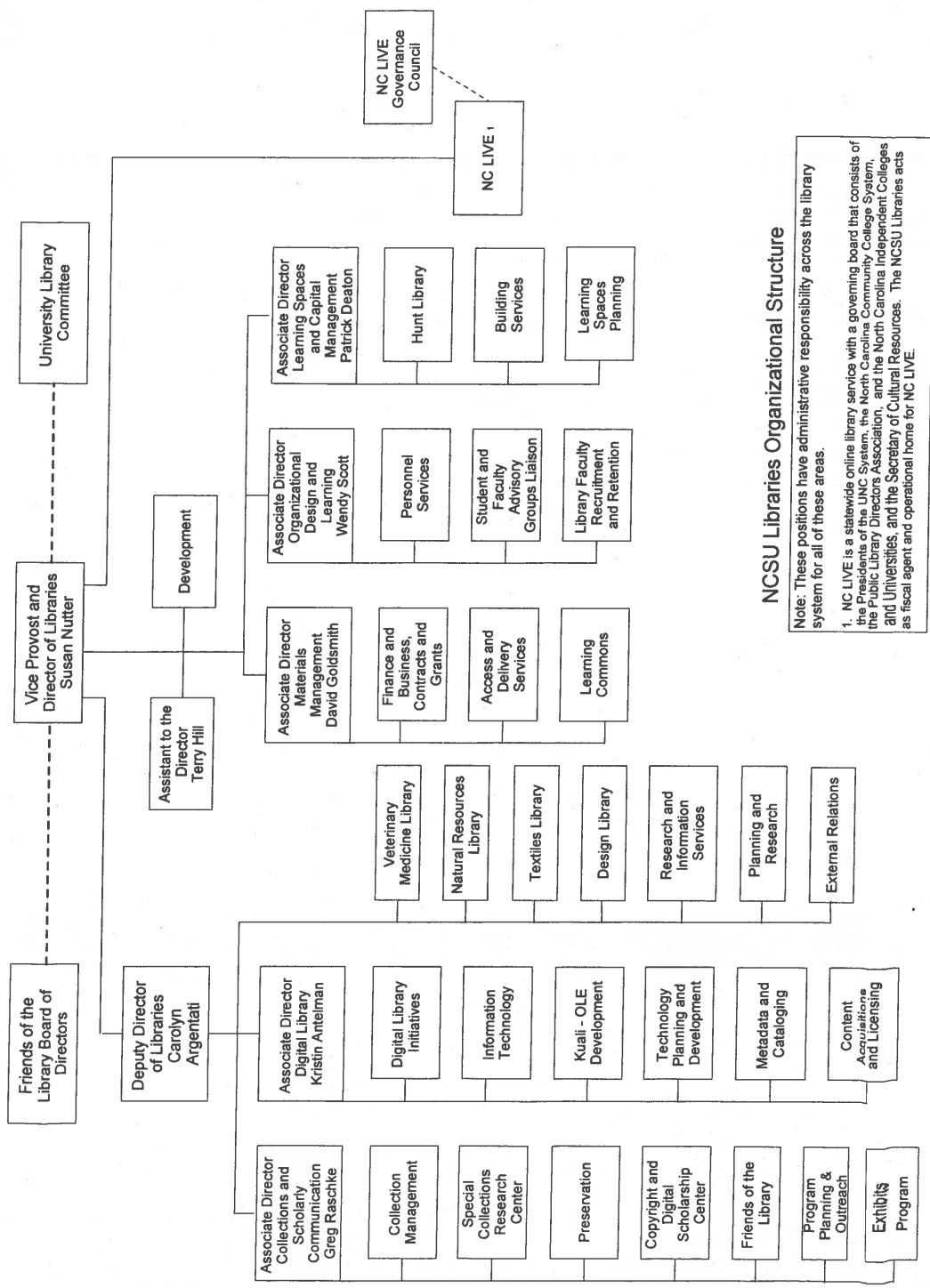
ELLE
Electronic Librarians
2008

North Carolina State University Libraries Organizational Chart
(18 January 2008)

Note: The two AD positions at the left actually reported to the Deputy Director.



2012



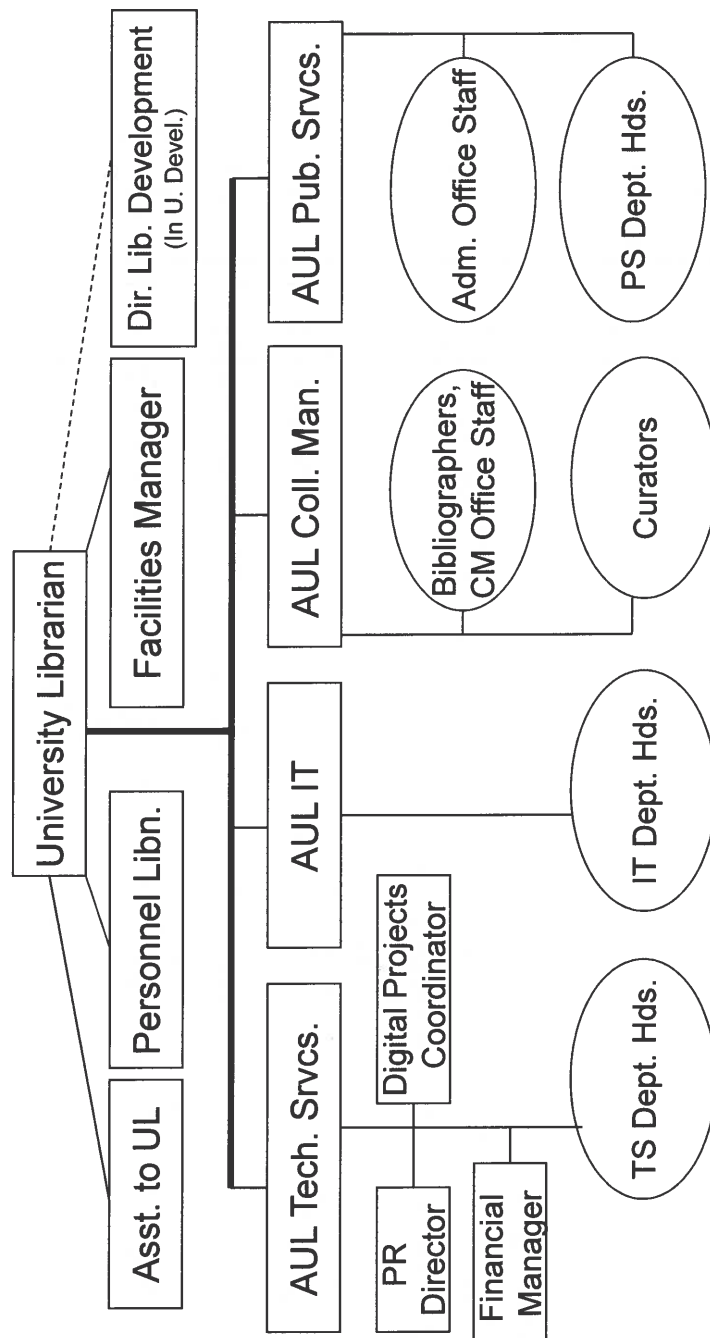
NCSU Libraries Organizational Structure

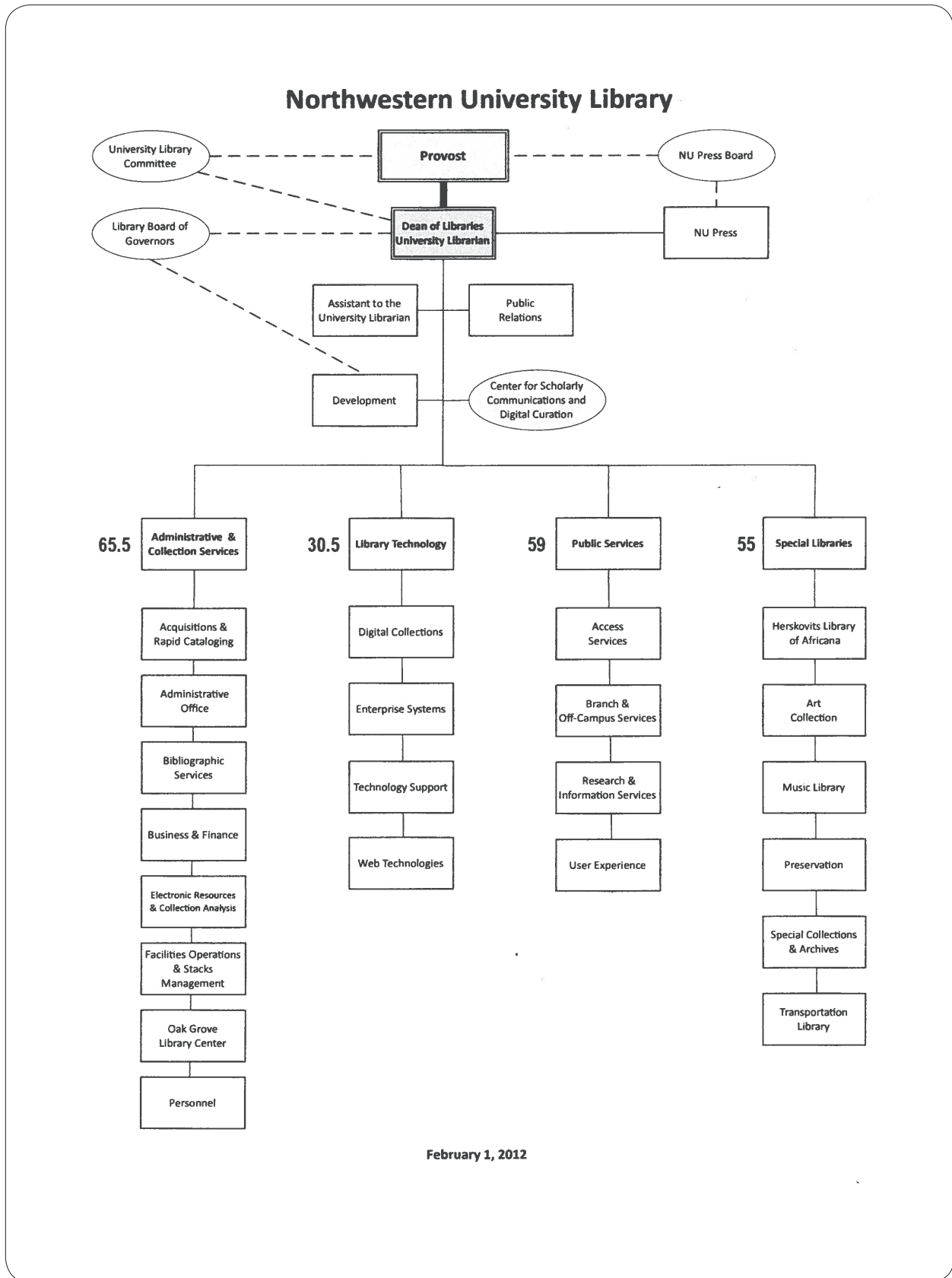
Note: These positions have administrative responsibility across the library system for all of these areas.

1. NC LIVE is a statewide online library service with a governing board that consists of the Presidents of the UNC System, the North Carolina Community College System, the Public Library Directors Association, and the North Carolina Independent Colleges and Universities, and the Secretary of Cultural Resources. The NCSU Libraries acts as fiscal agent and operational home for NC LIVE.

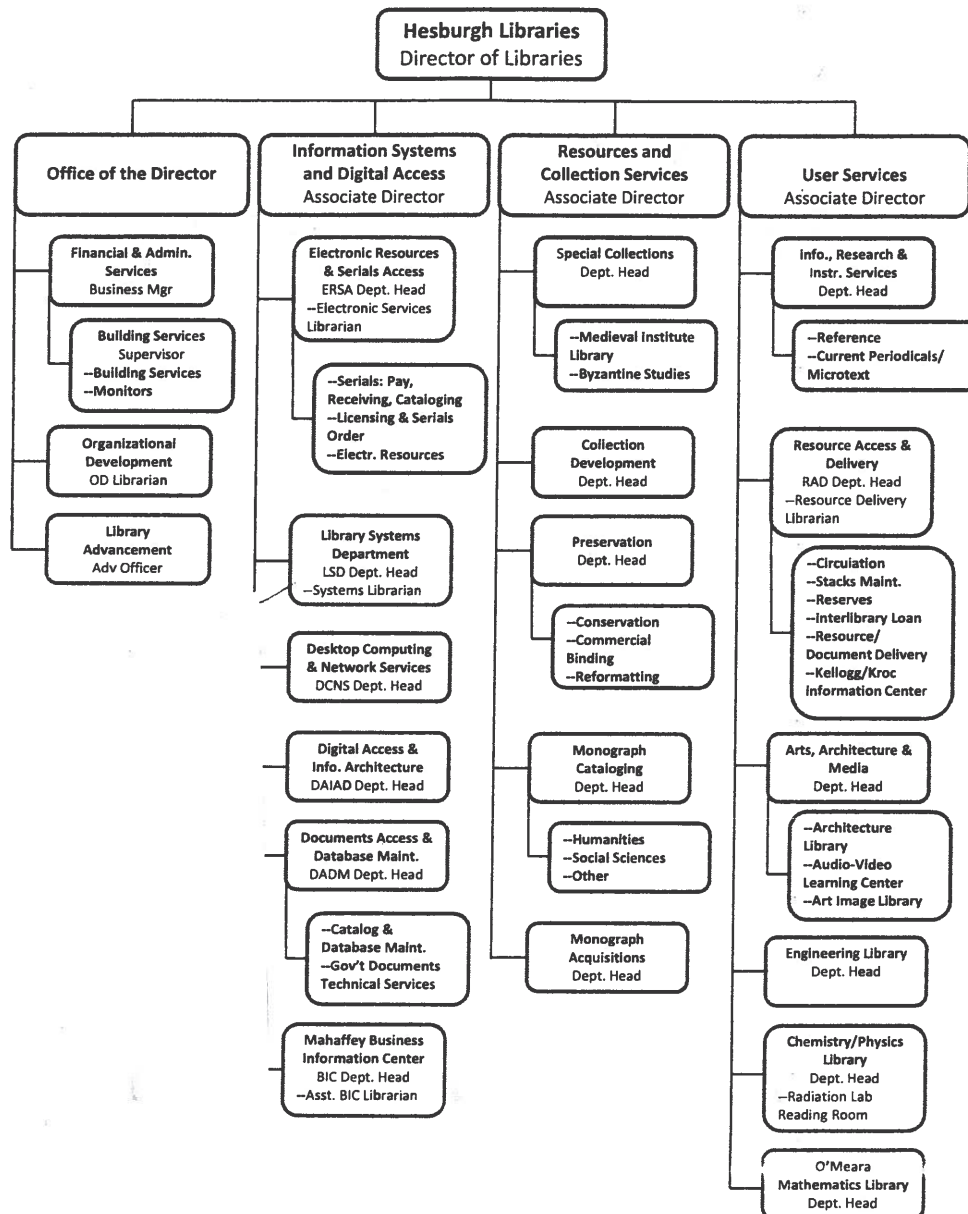
rev 2011-11-03

Northwestern University Library
Reporting Lines of Senior Administrators
Before FY08 Reorganization

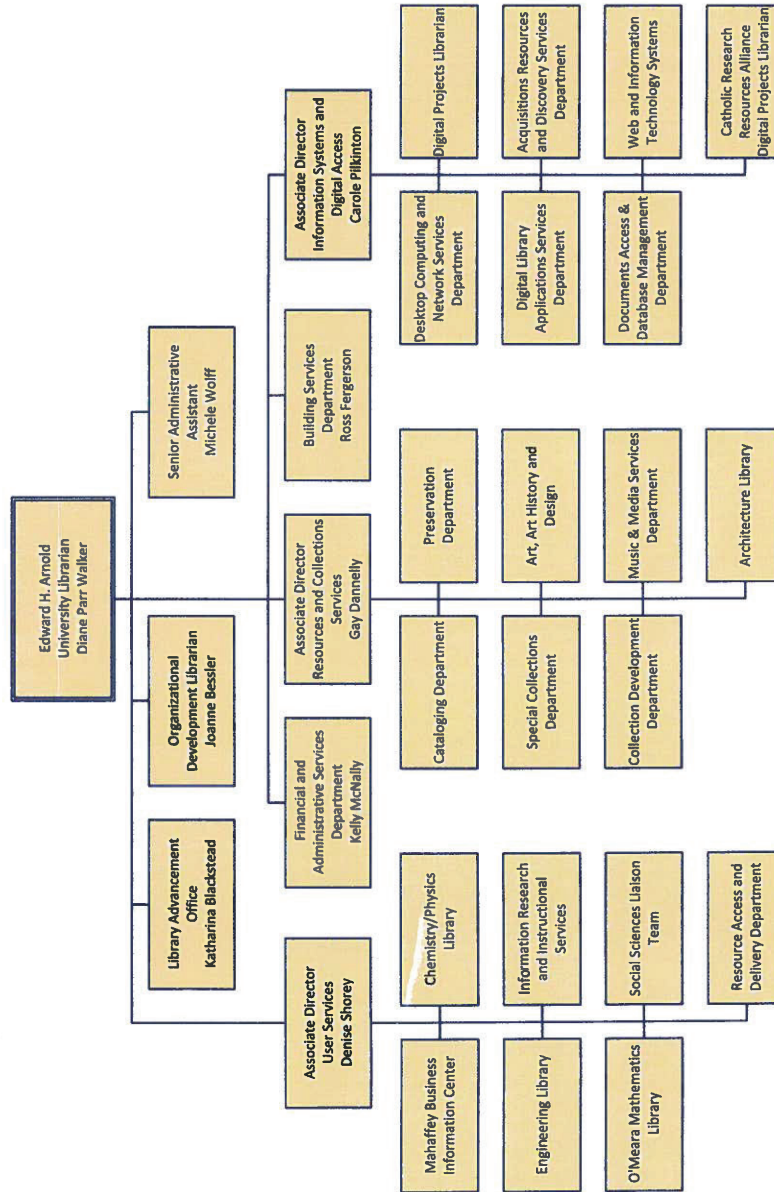


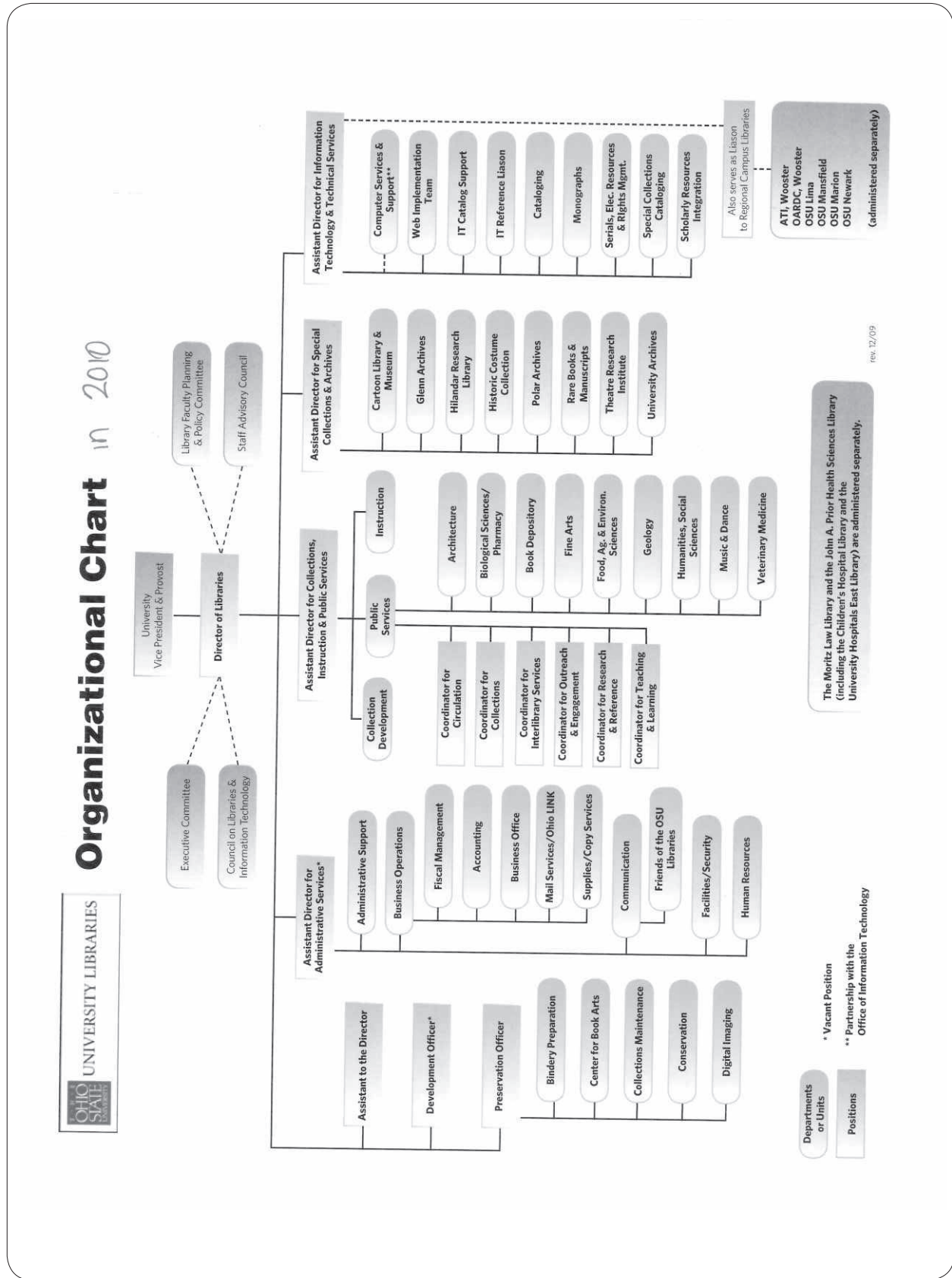


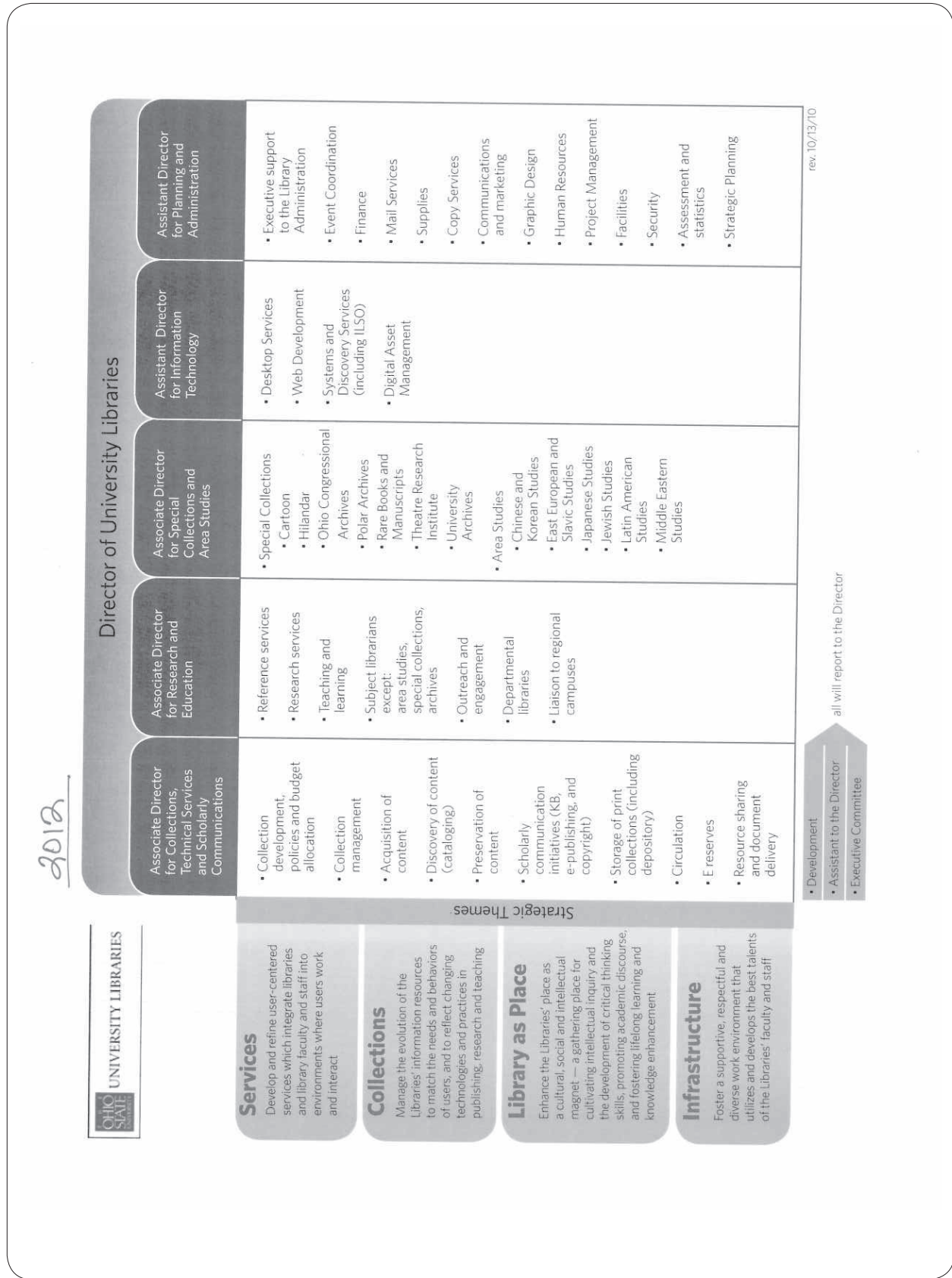
ORGANIZATION CHART AS OF MARCH 2009

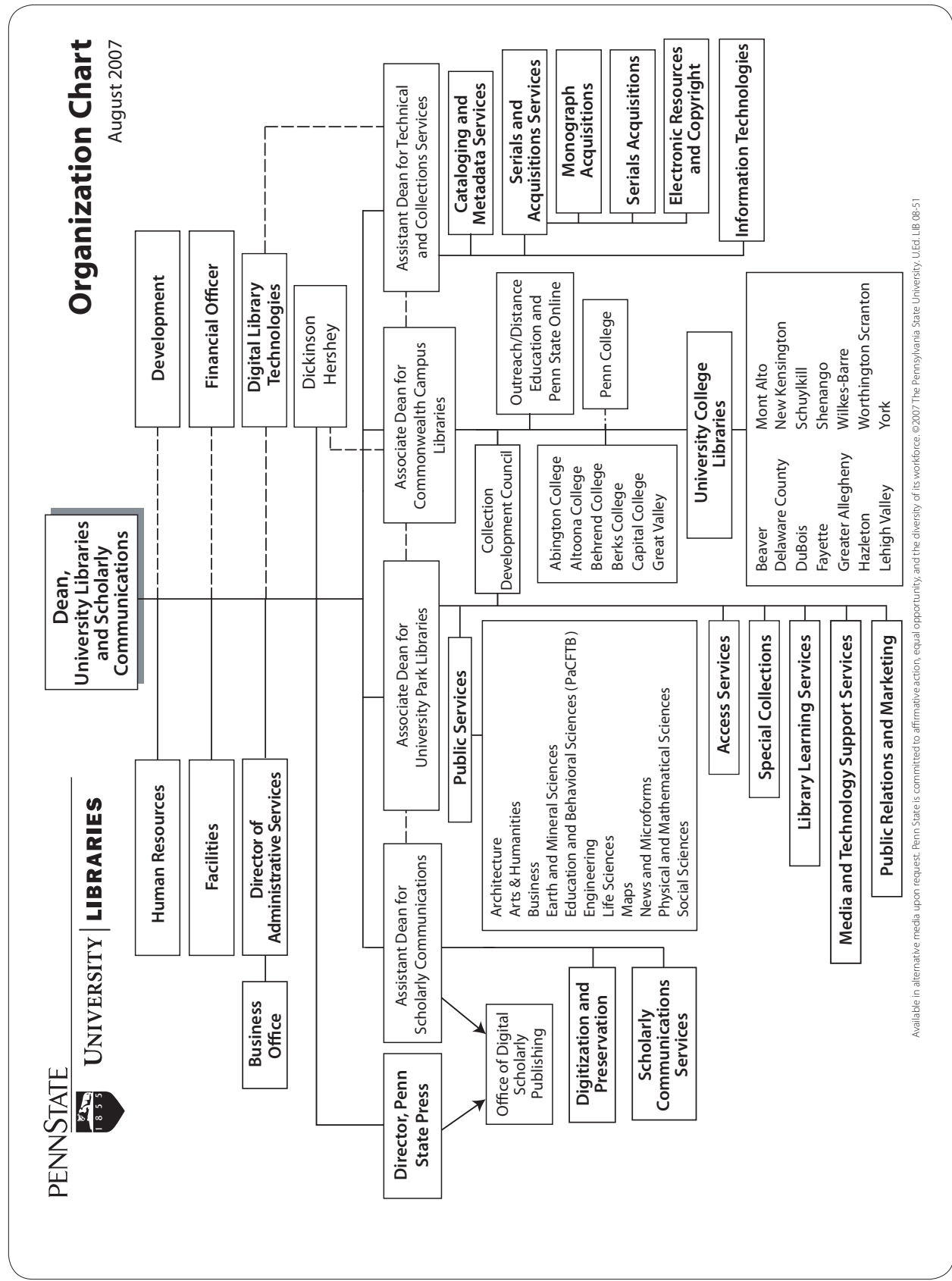


NOTRE DAME UNIVERSITY
2012 organization chart

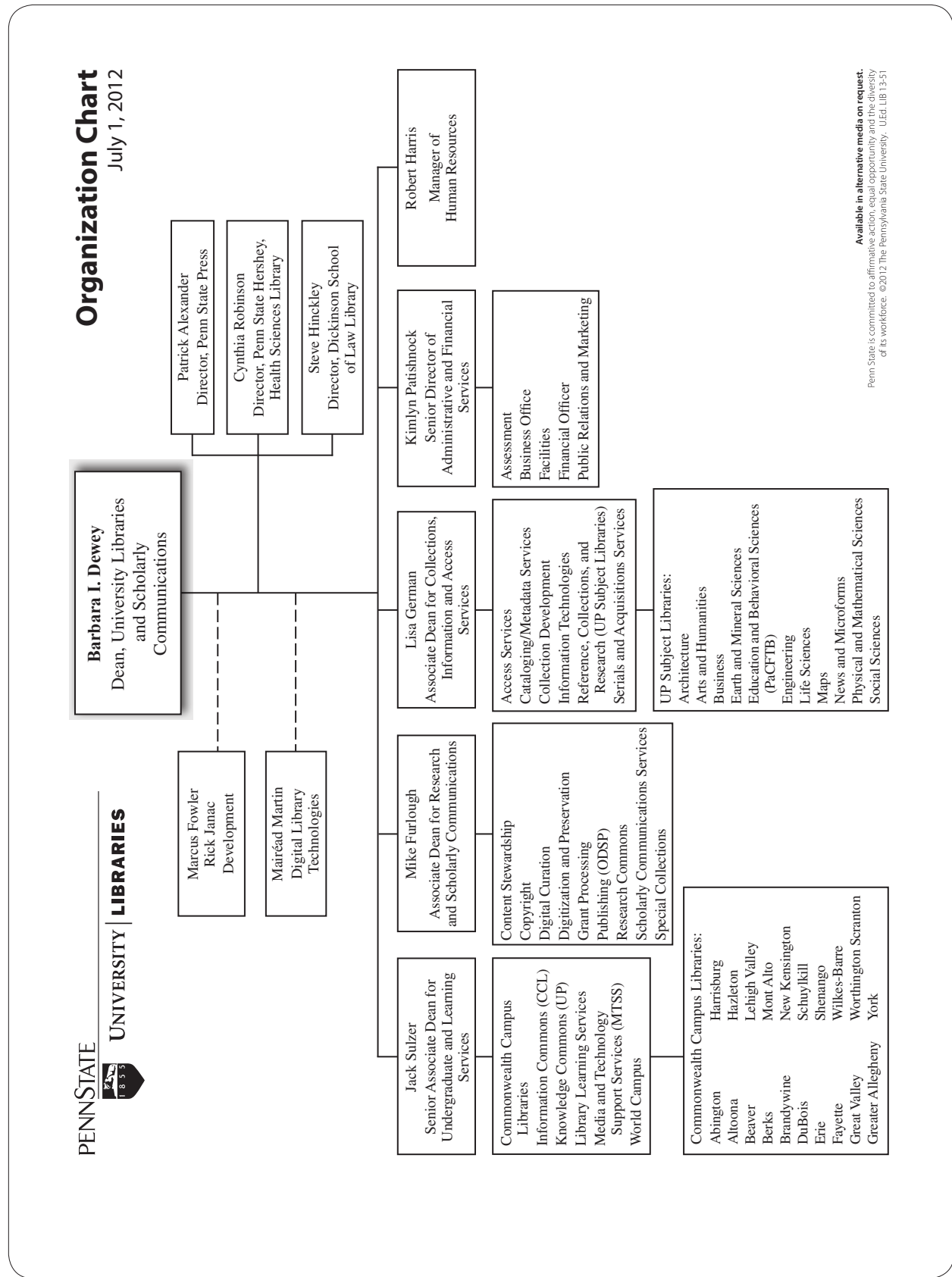




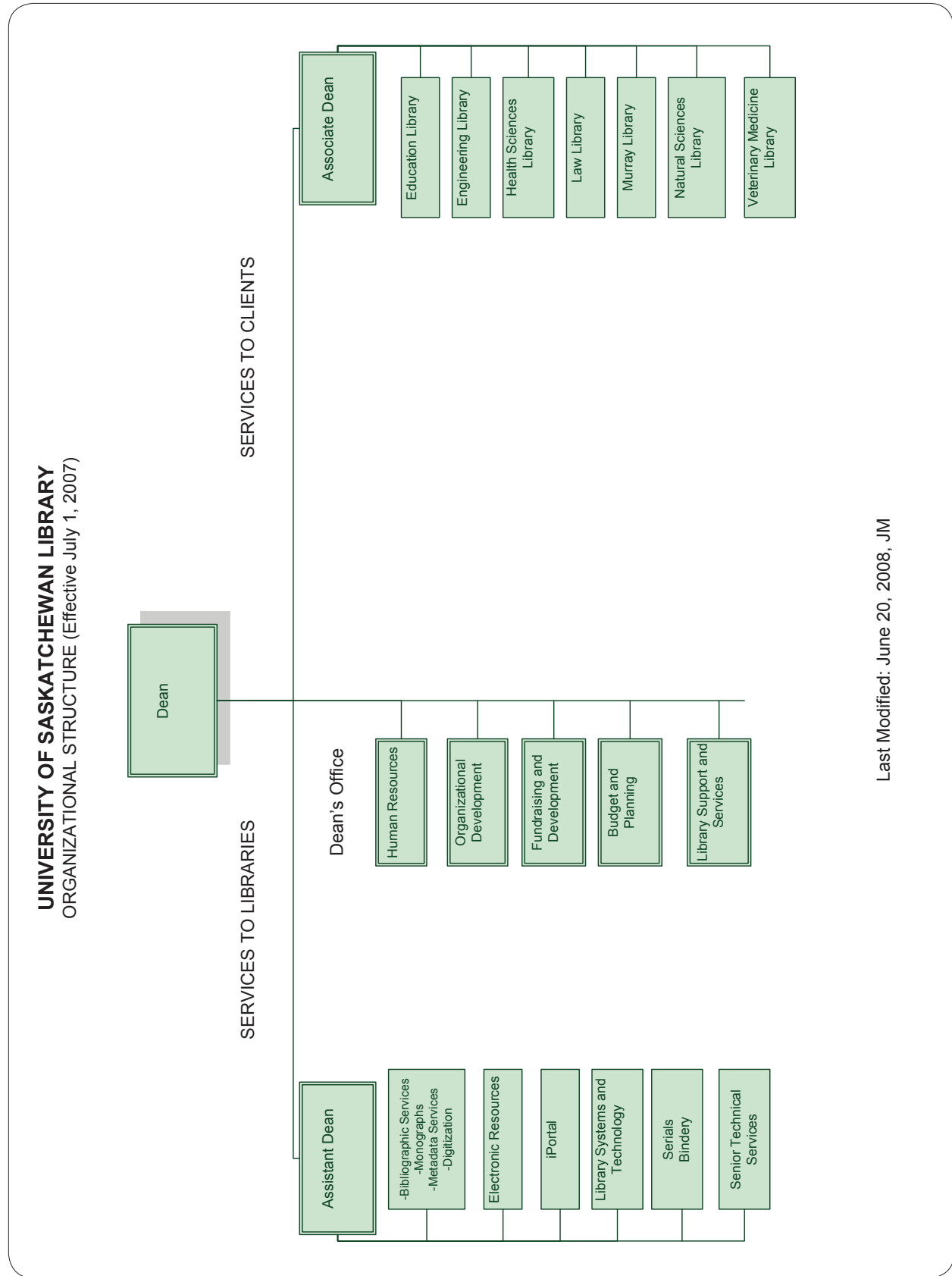




Available in alternative media upon request. Penn State is committed to affirmative action, equal opportunity, and the diversity of its workforce. ©2007 The Pennsylvania State University. U.Ed. LIB 06-51

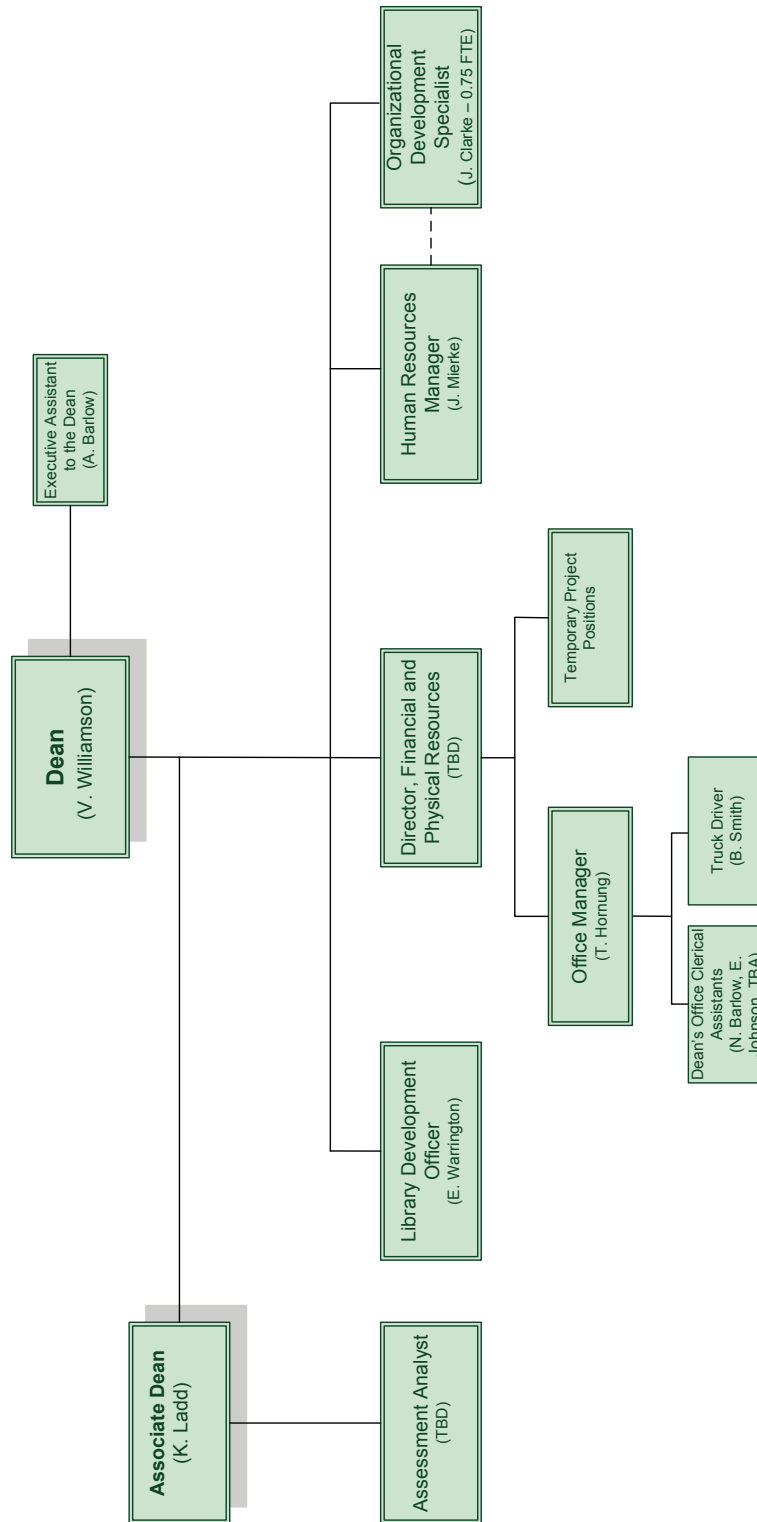


Available in alternative media on request. Penn State is committed to affirmative action, equal opportunity and the diversity of its workforce. ©2012 The Pennsylvania State University. UID: LIB 13-51



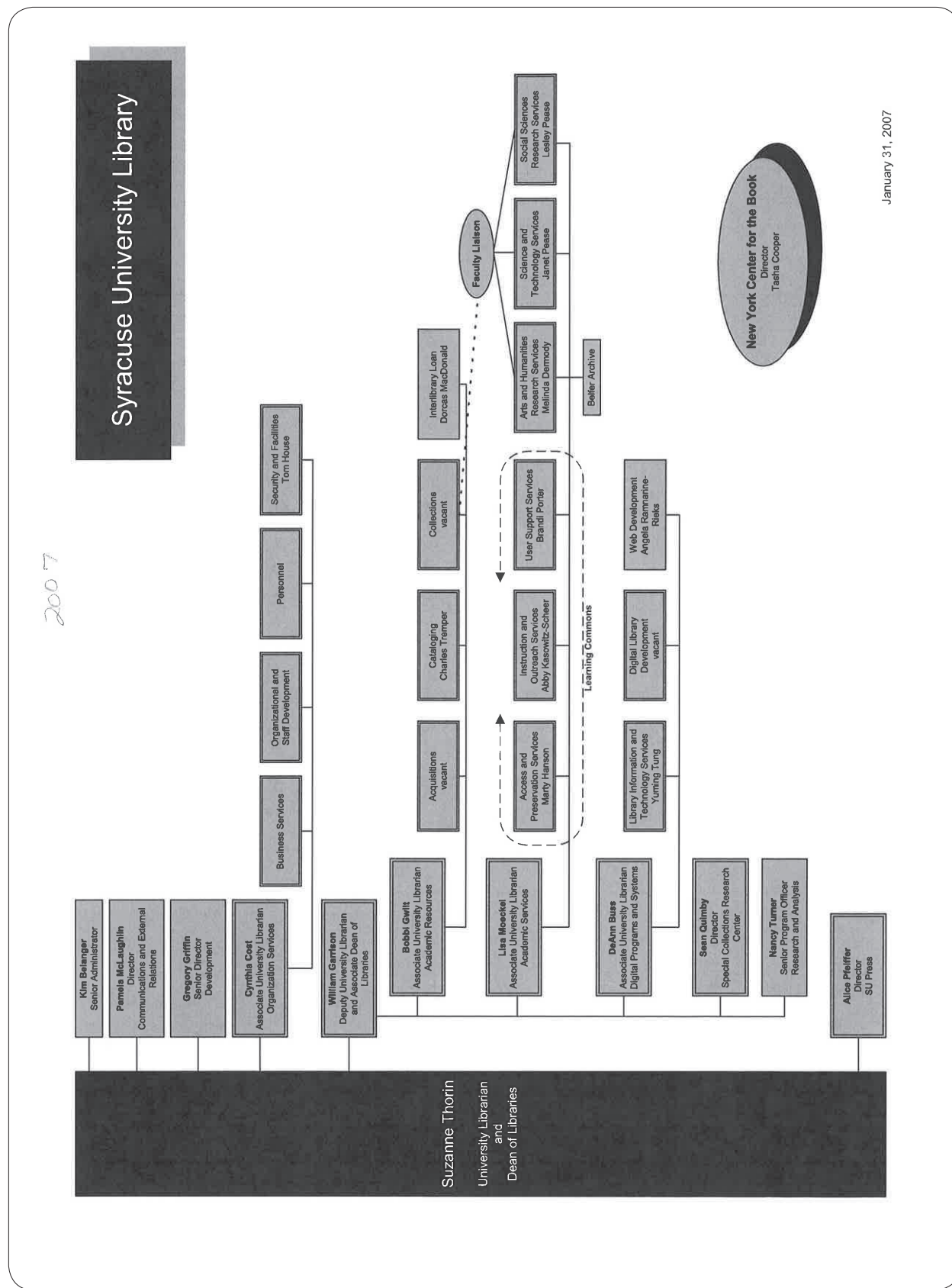
Last Modified: June 20, 2008, JM

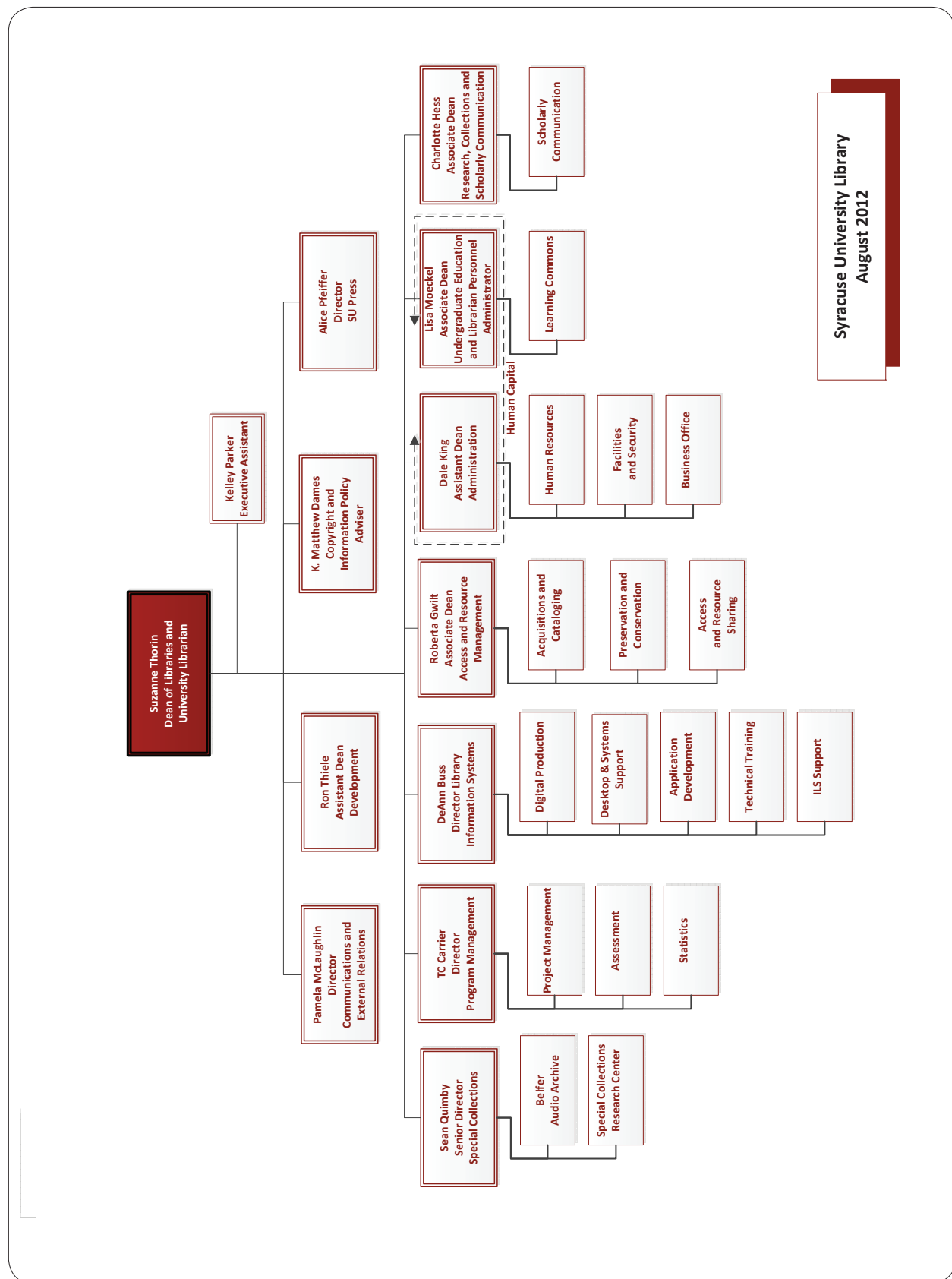
**UNIVERSITY LIBRARY
Dean's Office**
ORGANIZATIONAL STRUCTURE



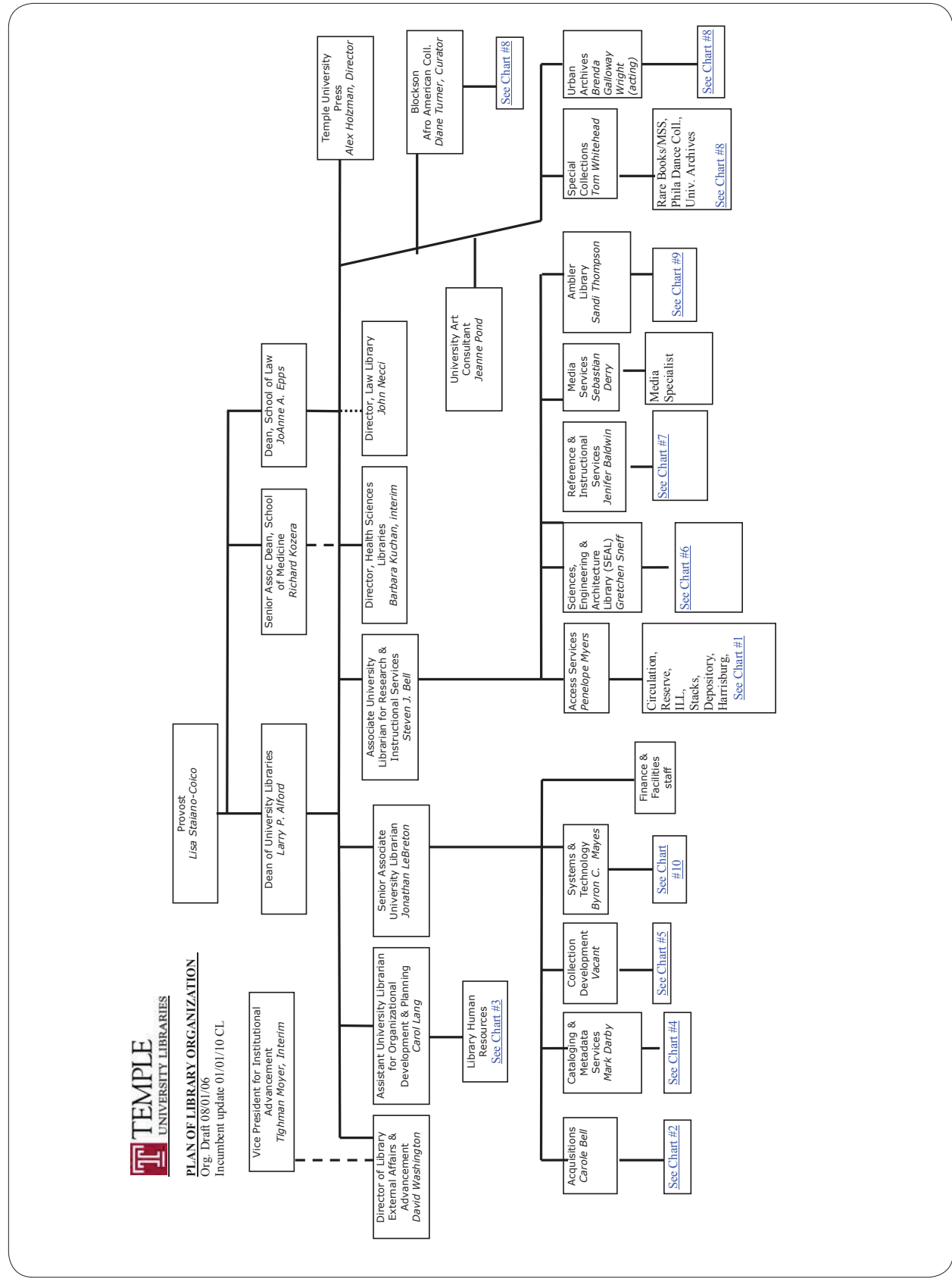
Last Modified: March 2, 2011, JM

SYRACUSE UNIVERSITY
2007 organization chart

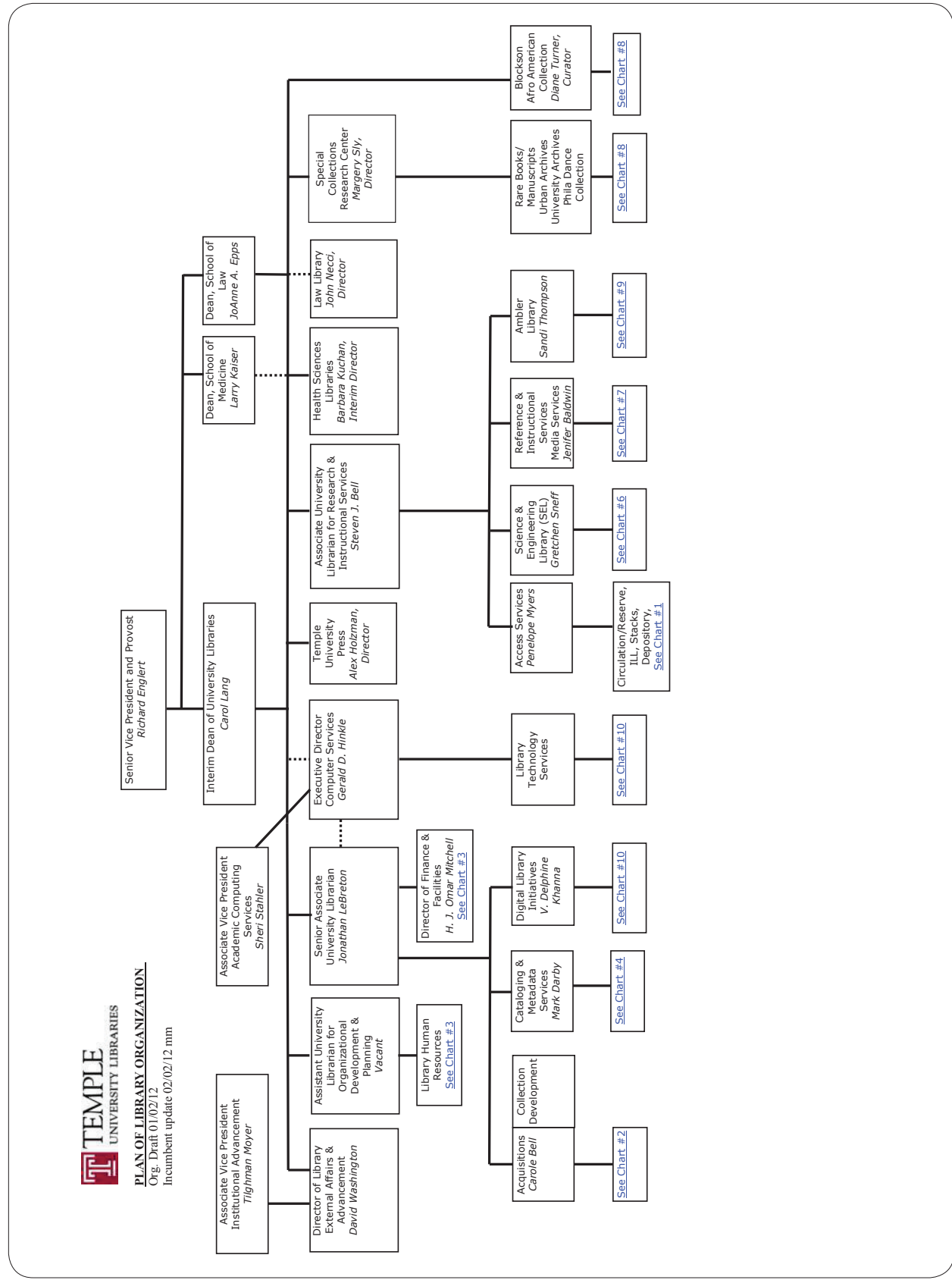




Syracuse University Library
 August 2012



TEMPLE UNIVERSITY
2012 organization chart

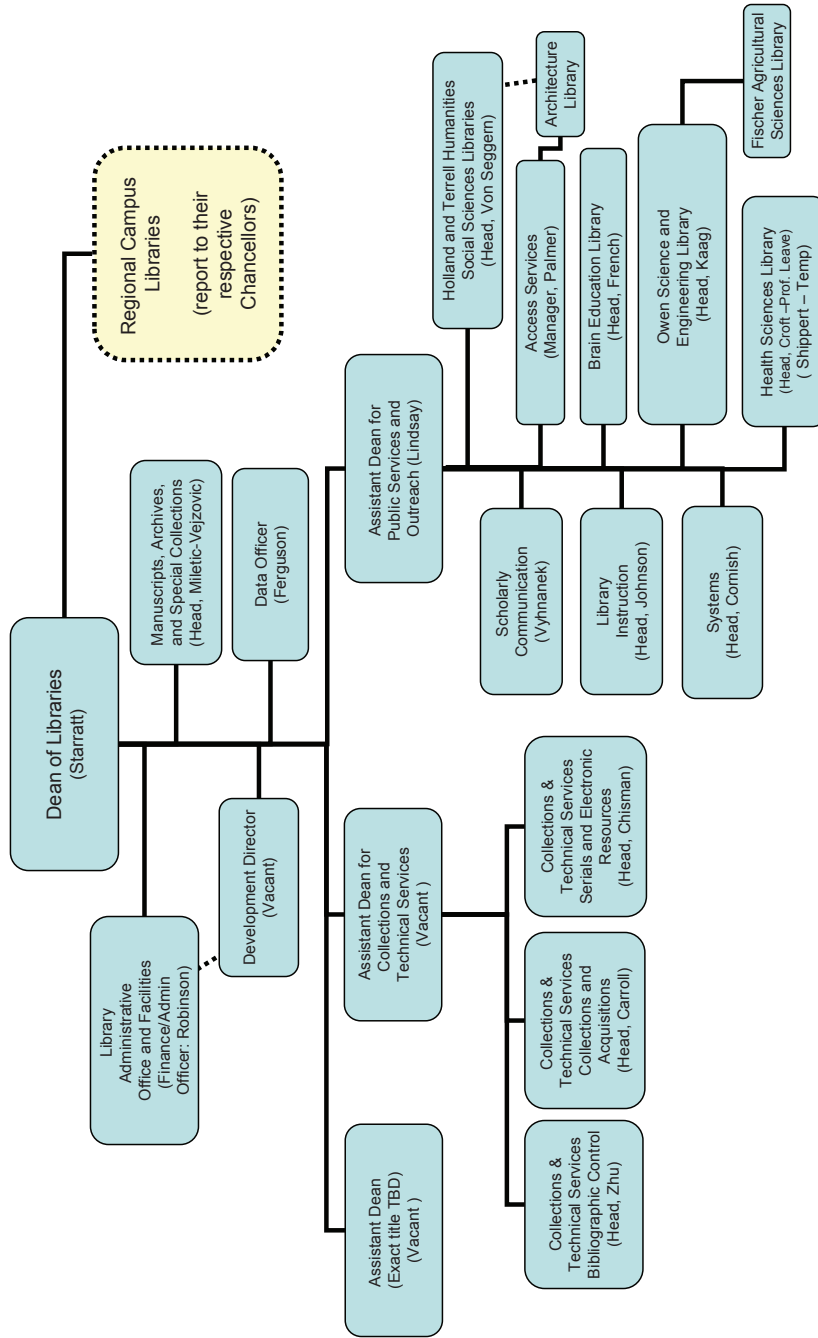


PLAN OF LIBRARY ORGANIZATION

Org. Draft 01/02/12

Incumbent update 02/02/12 mm

Washington State University Libraries
All Libraries
Organization Chart – December 1, 2007



Washington State University Libraries
All Libraries
Organization Chart – January 1, 2012

