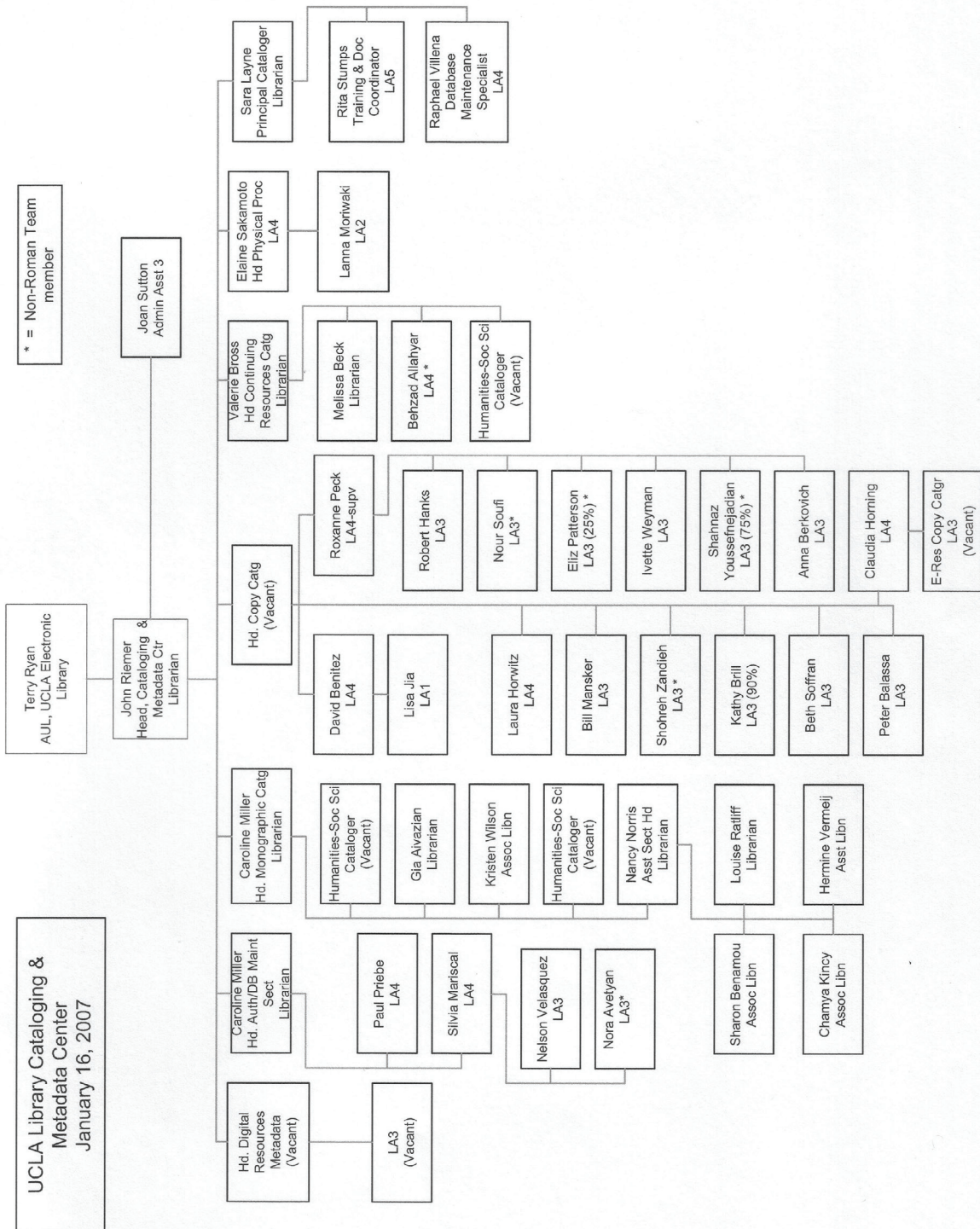
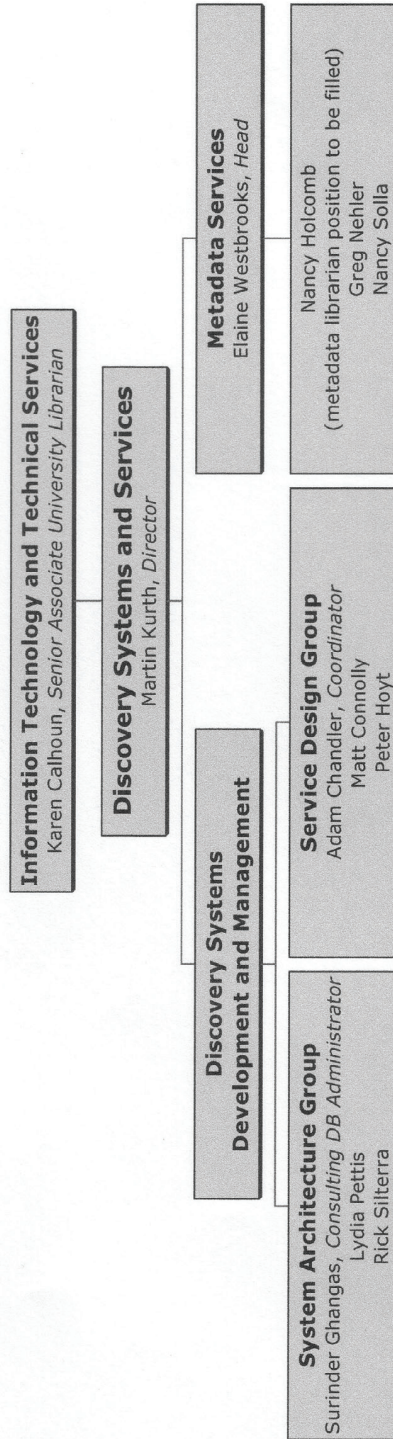


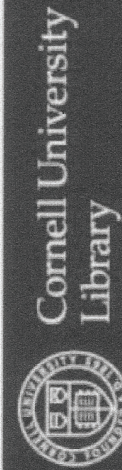
Organization Charts

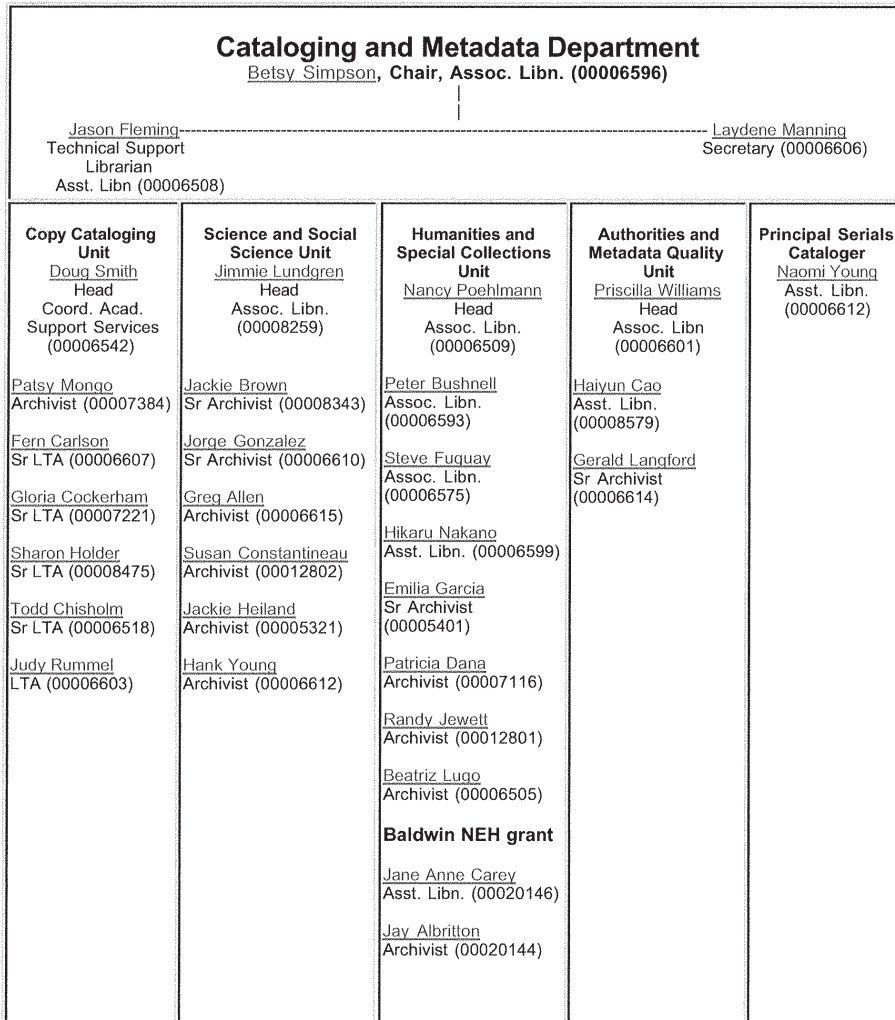


Discovery Systems and Services

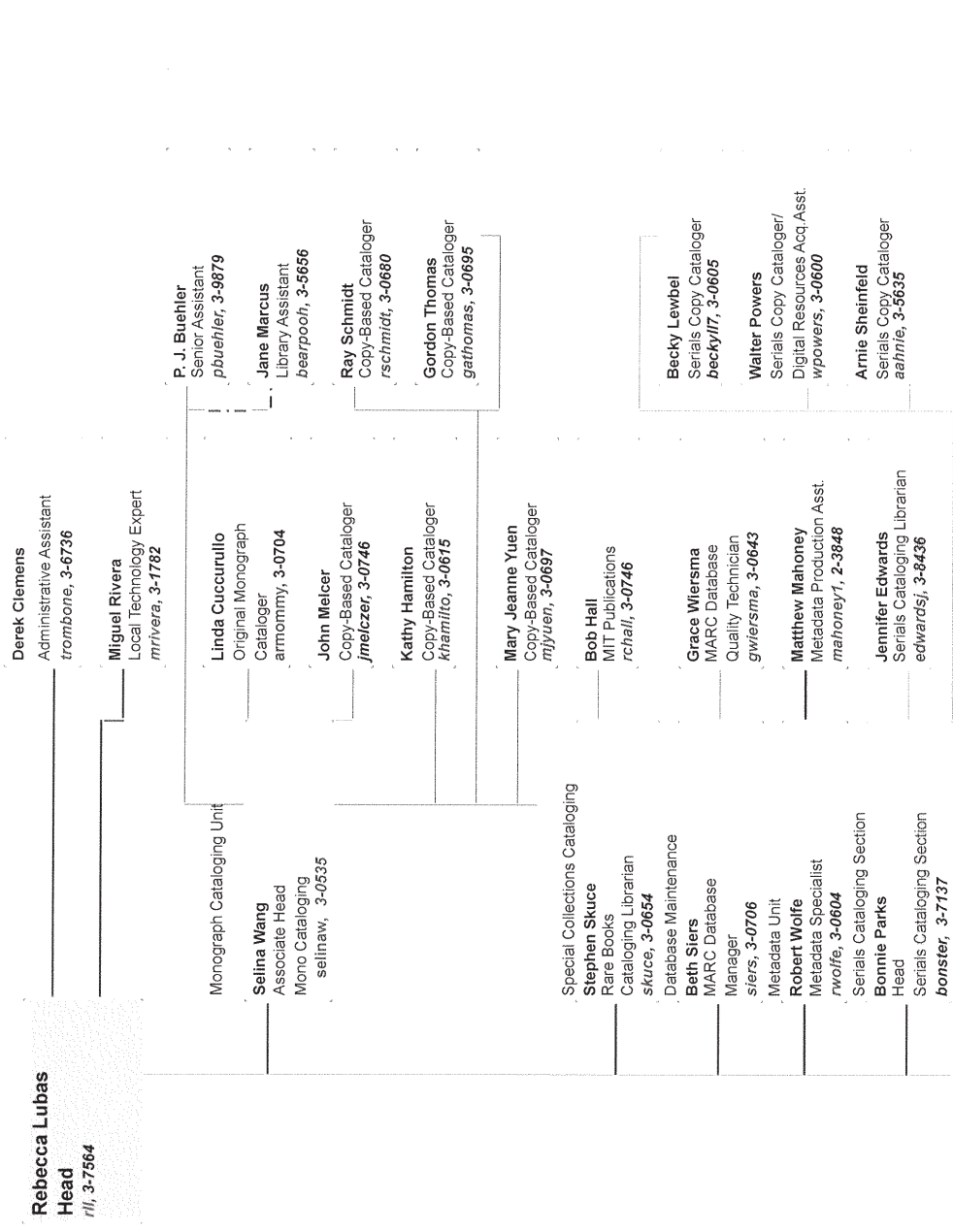


10/17/06





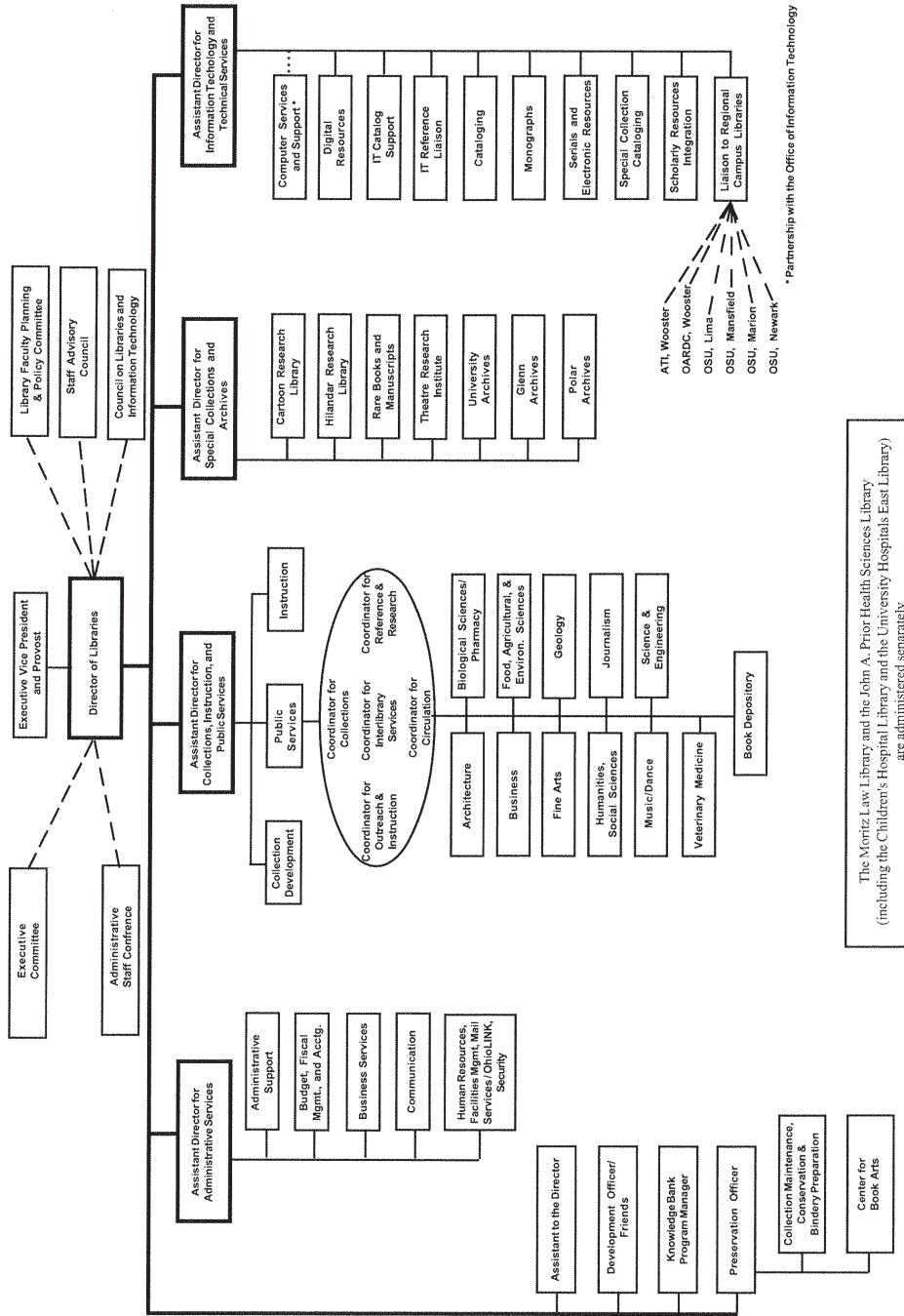
CATALOGING AND METADATA SERVICES



11/6/2006



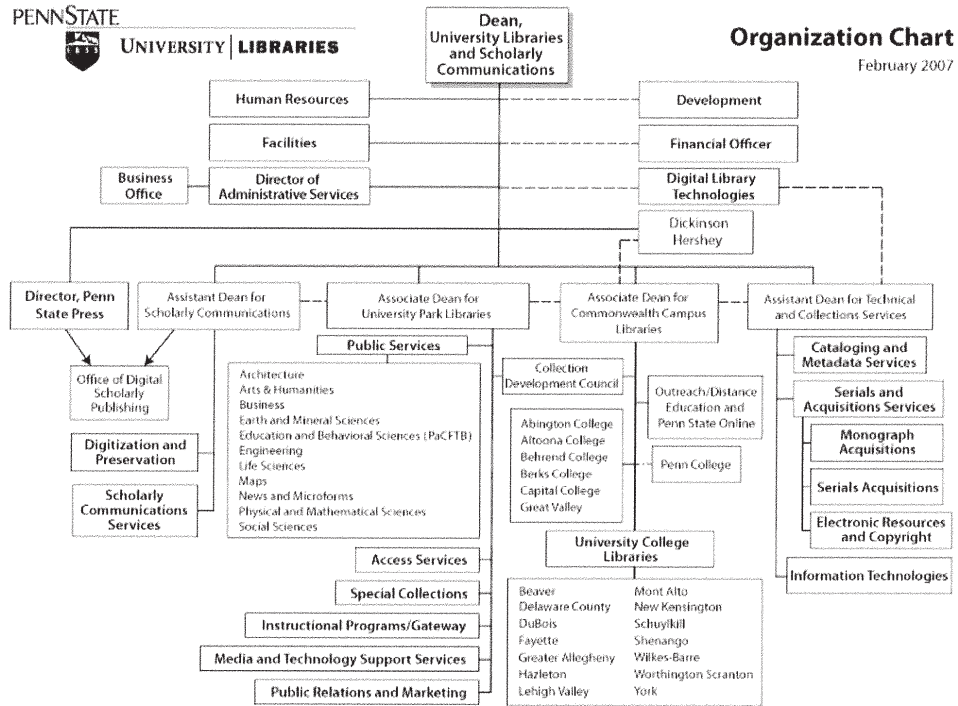
The Ohio State University Libraries Organizational Chart



The Moritz Law Library and the John A. Prior Health Sciences Library
(including the Children's Hospital Library and the University Hospitals East Library)
are administered separately

* Partnership with the Office of Information Technology

<http://www.libraries.psu.edu/pubinfo/organization.html>



(Libraries and departments with public Web pages are clickable)

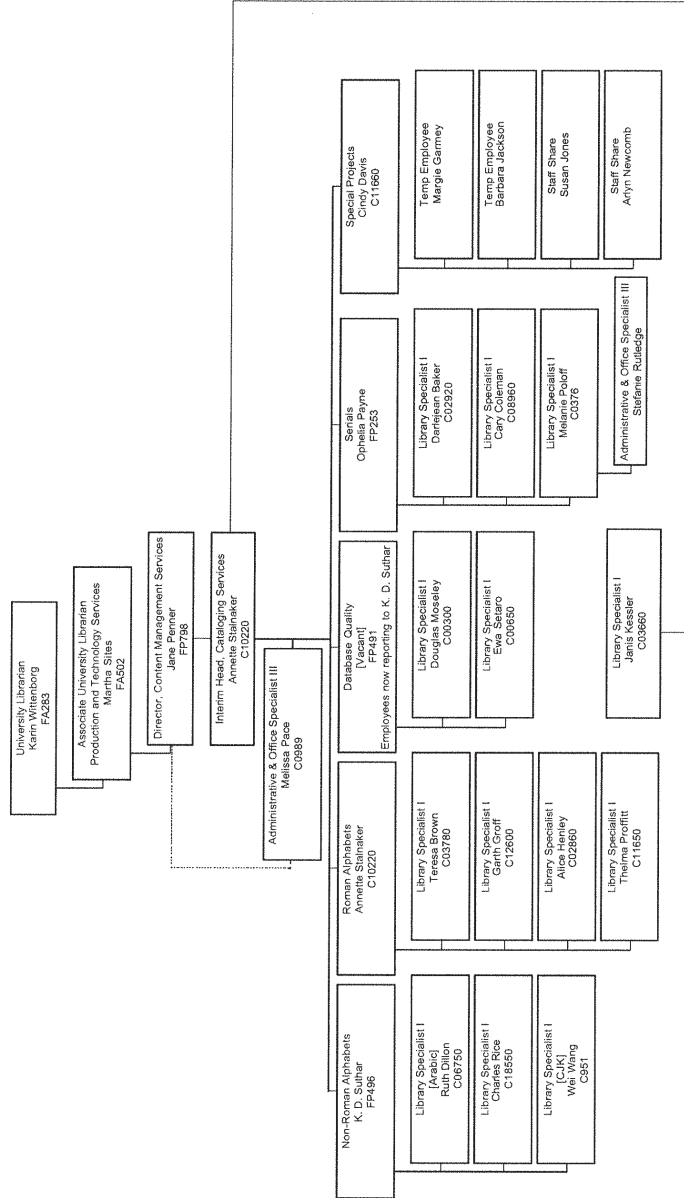
Download a printable PDF of this chart

[About the Libraries](#) | [University Libraries Home](#) | [Penn State Home](#) | [Search the Libraries](#) | [Search Penn State](#)

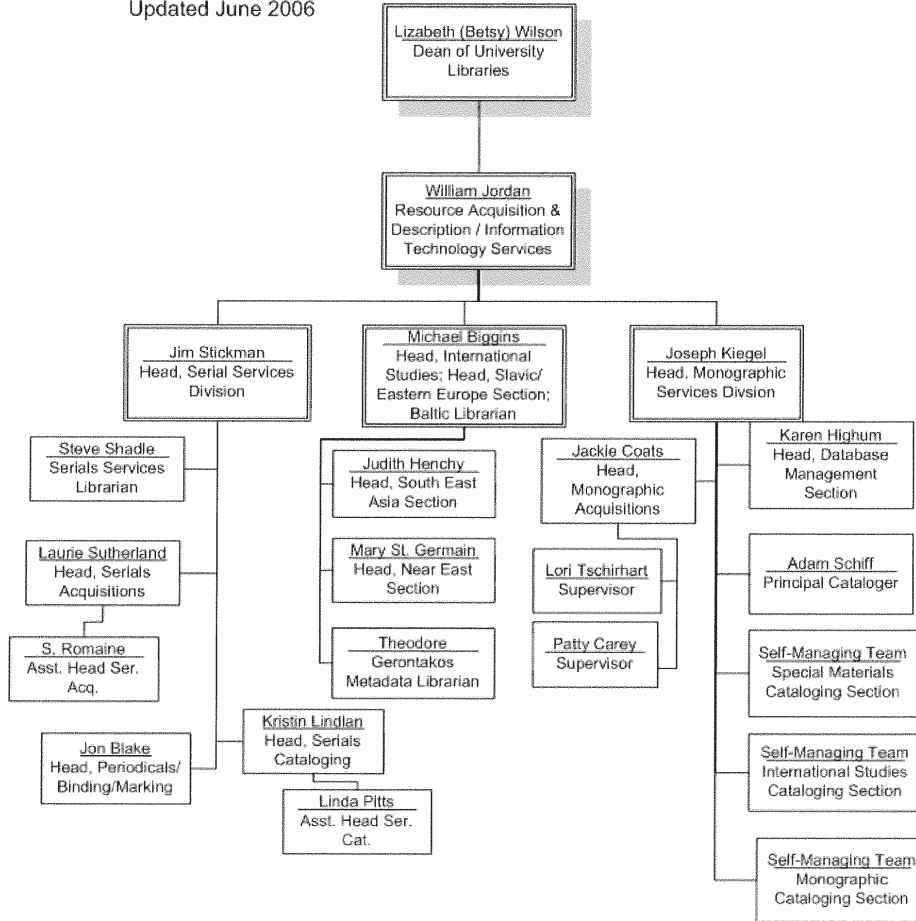
This information is available in alternative format on request

©2005 The Pennsylvania State University
 Privacy and Legal Statements
 Page Last Updated 2/9/07 - Wilson Hutton
 U.Ed. LIB 07-53

Cataloging Services
Interim Organizational Chart
 Last Updated: 19 March 2007

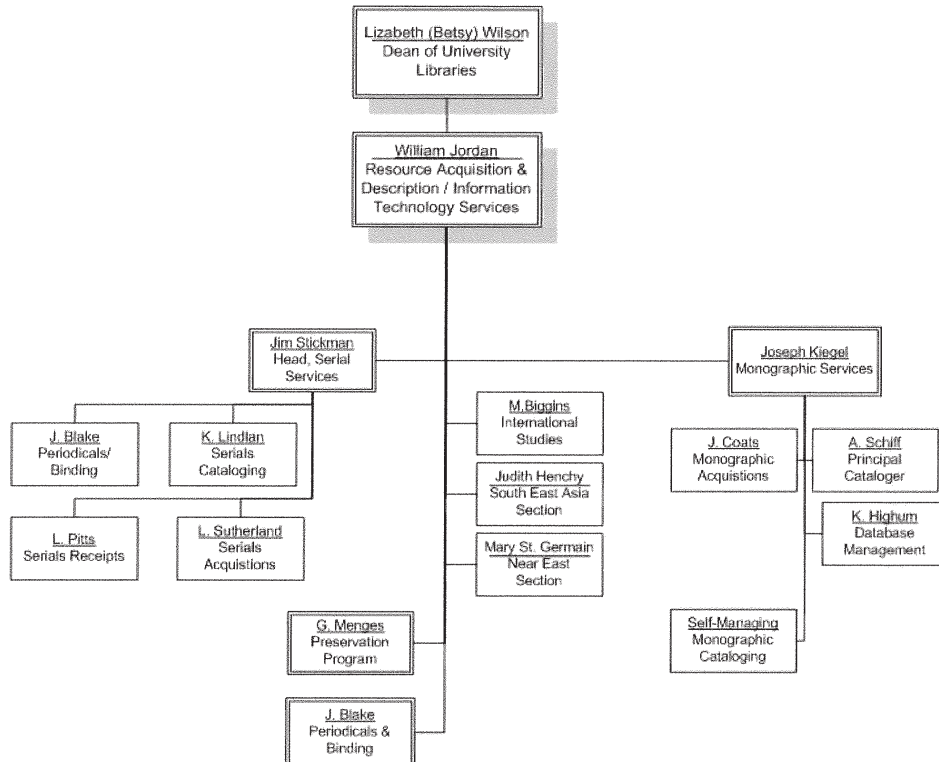


**Resource Acquisition
and Description**
(part of RAD/ITS)
Updated June 2006



Resource Acquisition and Description (part of ITS)

Updated May 2006



Washington State University Libraries
 All Libraries
 Organization Chart – January 1, 2007

Metadata services in checked acpts. ↙

