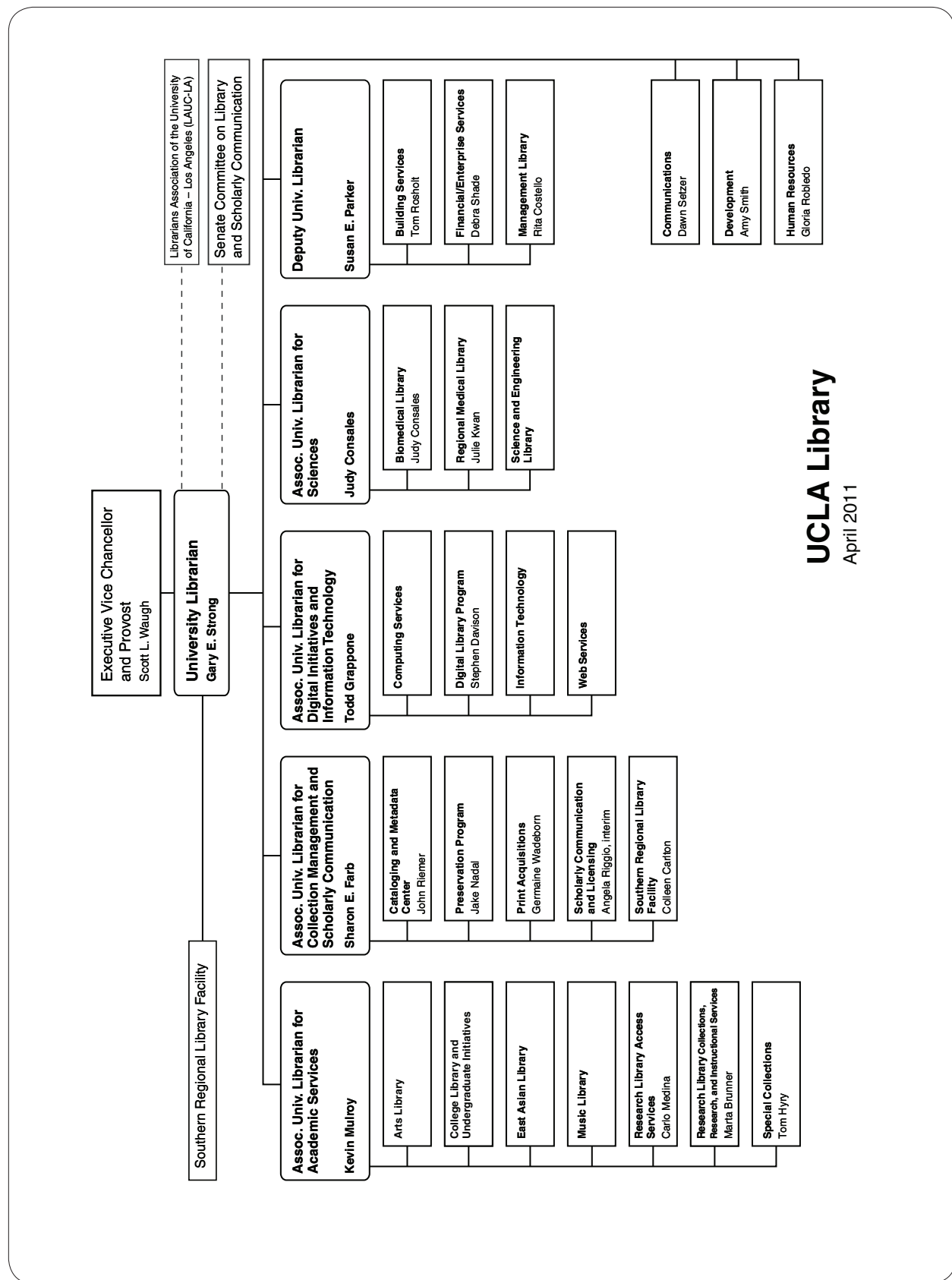
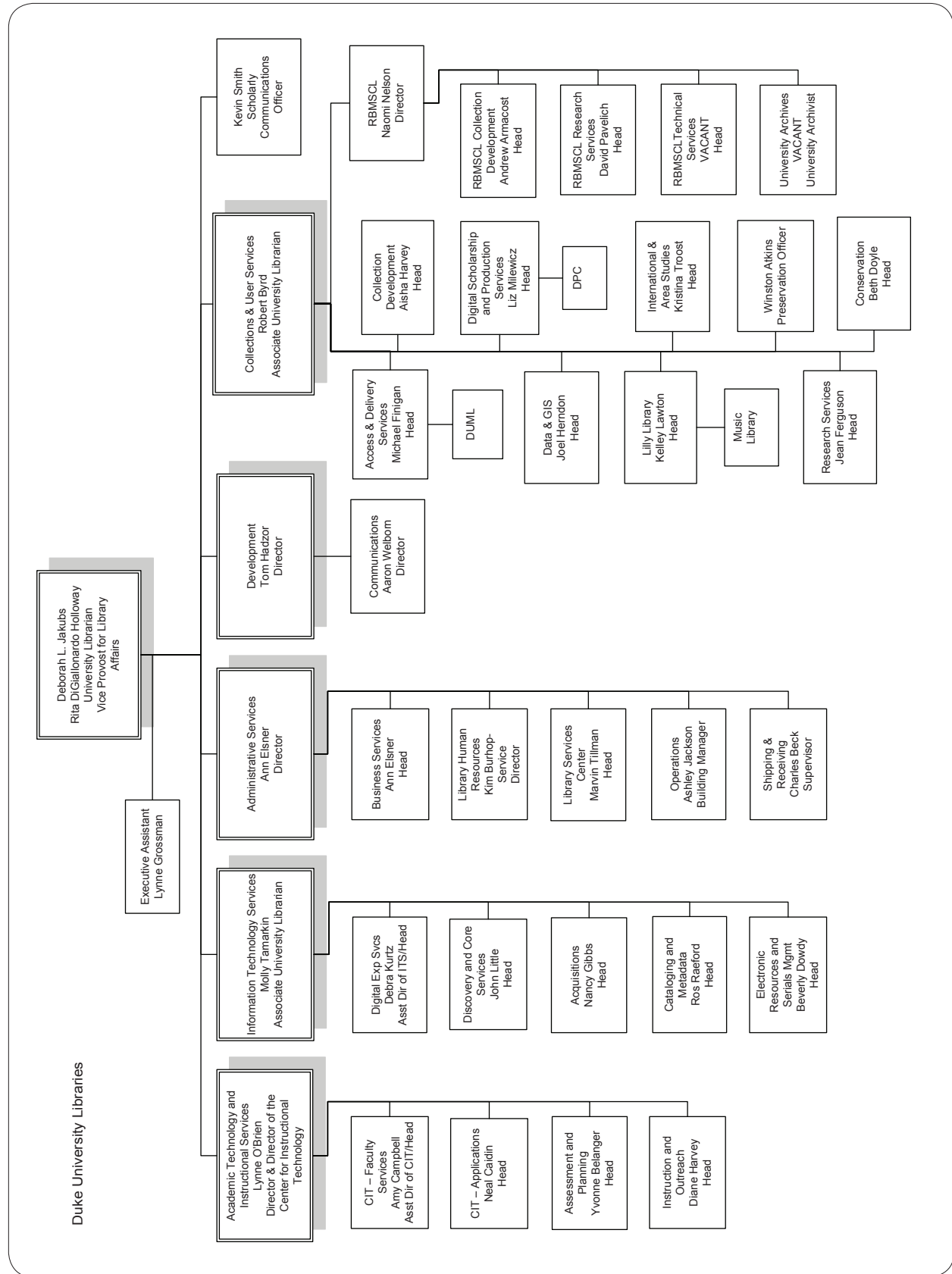


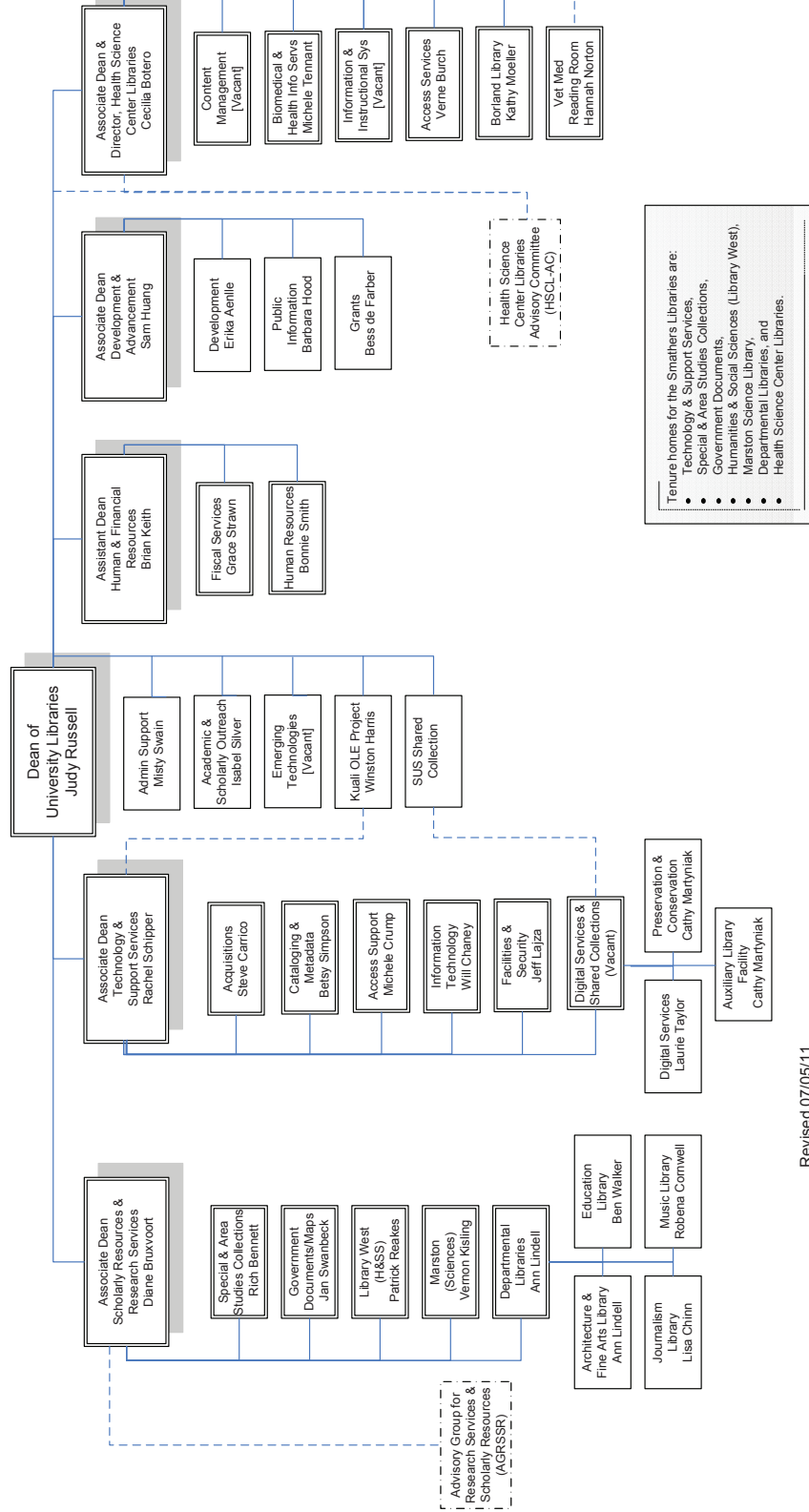
Organization Charts



UCLA Library
 April 2011



George A. Smathers Libraries University of Florida



Tenure homes for the Smathers Libraries are:

- Technology & Support Services,
- Special & Area Studies Collections,
- Government Documents,
- Humanities & Social Sciences (Library West),
- Marston Science Library,
- Departmental Libraries, and
- Health Science Center Libraries.

Revised 07/05/11

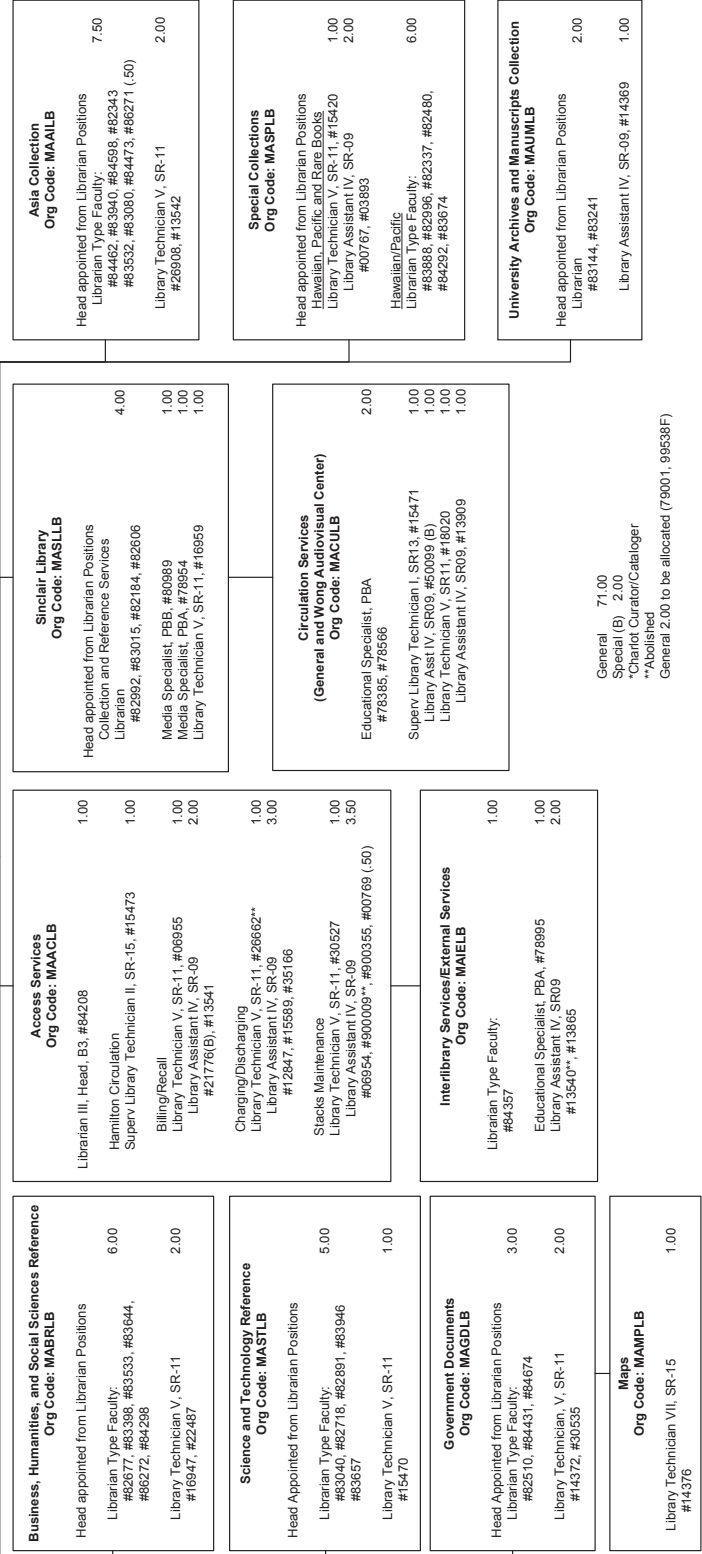


back

STATE OF HAWAII
UNIVERSITY OF HAWAII
UNIVERSITY OF HAWAII AT MANOA
LIBRARY SERVICES
CHART II

Office of the University Librarian

Public Services
Org Code: MAPSLB
Librarian, Head
Librarian Type Faculty: 1.00
#84017*



Maintains the order of the physical collection. Stack maintenance includes preservation analysis, mold control monitoring conditions of library material and the stacks environment. Equipment maintenance includes monitoring and maintenance of environmental equipment (fans) cleaning and repair of all electronic equipment and media. Works in conjunction with the Campus Security staff to maintain the security of library collections and patrons.

Provides assistance and instruction for patrons using the audiovisual media in the collection and instruction in the use of the equipment housed therein. Access is provided to music CDs tapes and records, CD-ROMS, individual and group previewing of laserdiscs, videotapes, films and other media.

Provides business services, including self-service photocopying, billing and fines, and patron registration.

Asia Collection – Org Code: MAAILB

The Asia Collection is an internationally recognized area collection incorporating collections from East, Southeast and South Asia. It provides the University community and the State with major resources on Asia for study, research and training. Selects and arranges for the acquisition of books, journals, newspapers, non-commercial publications and other print and non-print materials from and about South, Southeast and East Asia published both in Western and Asian languages. (Actual ordering and processing operations are centralized in the Collection Services departments). The collection receives materials published in 17 Asian languages as well as English and other Western languages. Emphasis of the Collections are in the social sciences and humanities disciplines, with selected material on science subjects that reflect cultural traditions. Librarians develop and maintain close contact with libraries and institutions engaged in Asia related scholarly activities throughout the world. Access to the research resources of the Asia Collection is provided through specialized reference service, instruction in the use of the collection, preparation of bibliographic aids and guides to electronic resources.

Special Collections – Org Code: MASPLB

Special Collections incorporates several discrete collections: Hawaiian, Pacific, and Rare books. Because the material collected is rare, unique, or otherwise extraordinary, these collections require special, often unique policies and procedures for acquiring, processing, storing and patron use.

This department provides the University and the State with the most comprehensive collections and services possible relating to Hawai'i and the Pacific. It is responsible for specialized collection development activities required to maintain and develop the unique and internationally acclaimed Pacific Collection (Melanesia, Micronesia, and Polynesia) and the Hawaiian Collection. The Hawaiian Collection serves as a repository for Hawai'i State documents.

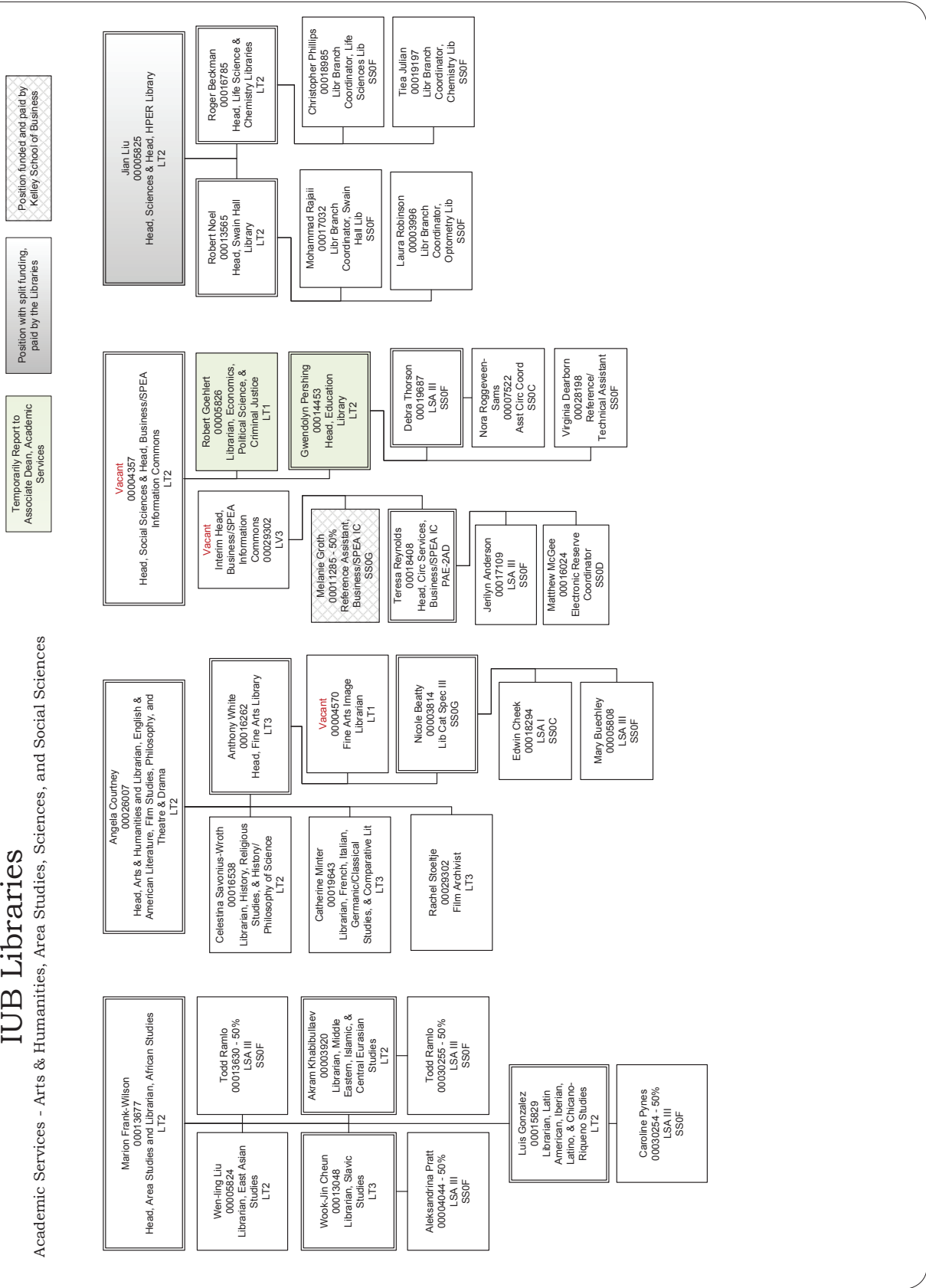
These collections support the University's teaching and research emphases on Hawaiian and Pacific studies.

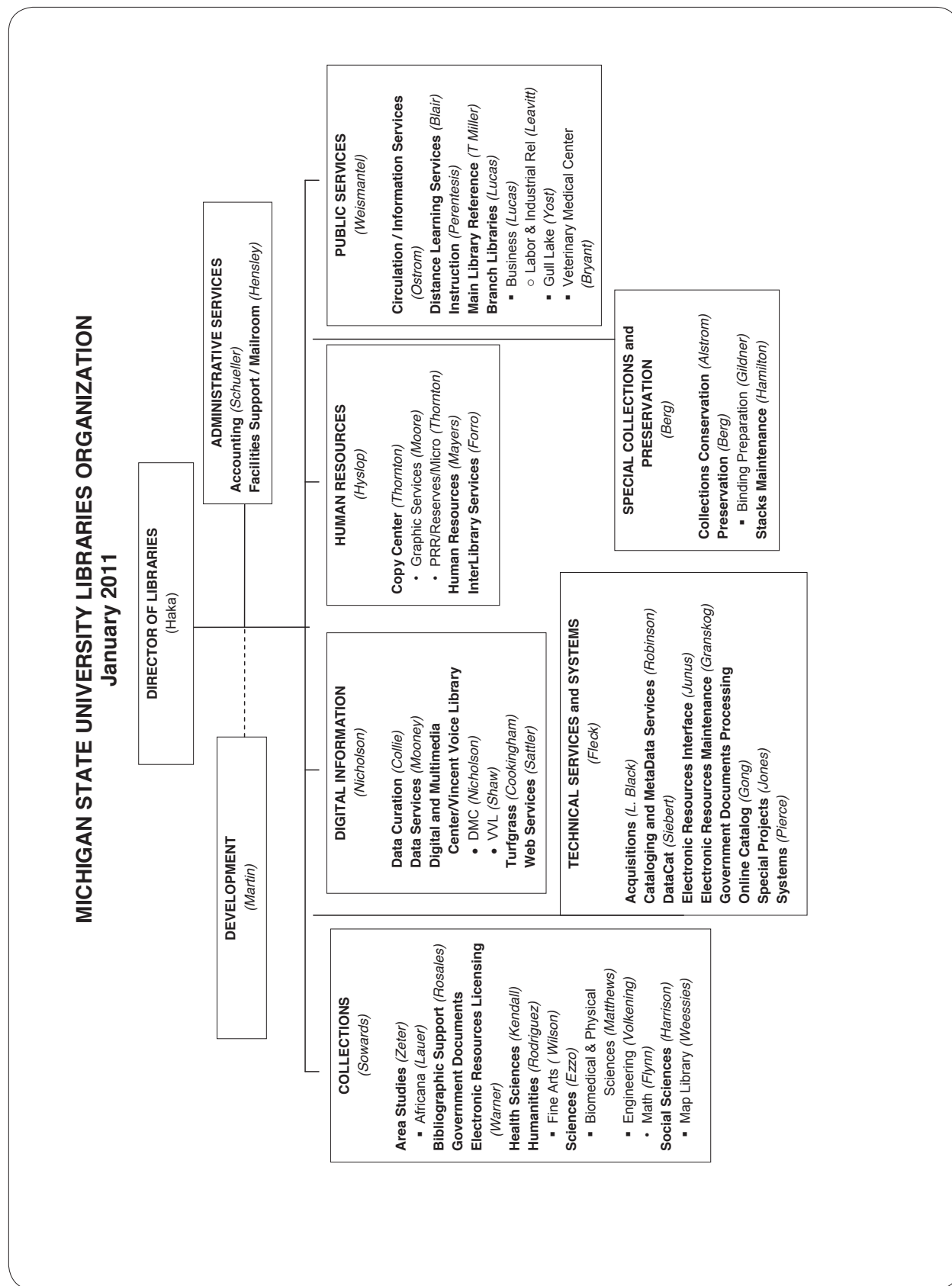
Provides in-depth reference and bibliographic assistance to resources in the Hawaiian and Pacific Collections and also for the Rare and other Special Collections.

Operates an automated circulation system and paging services to provide access to the Hawaiian, Pacific and other Special

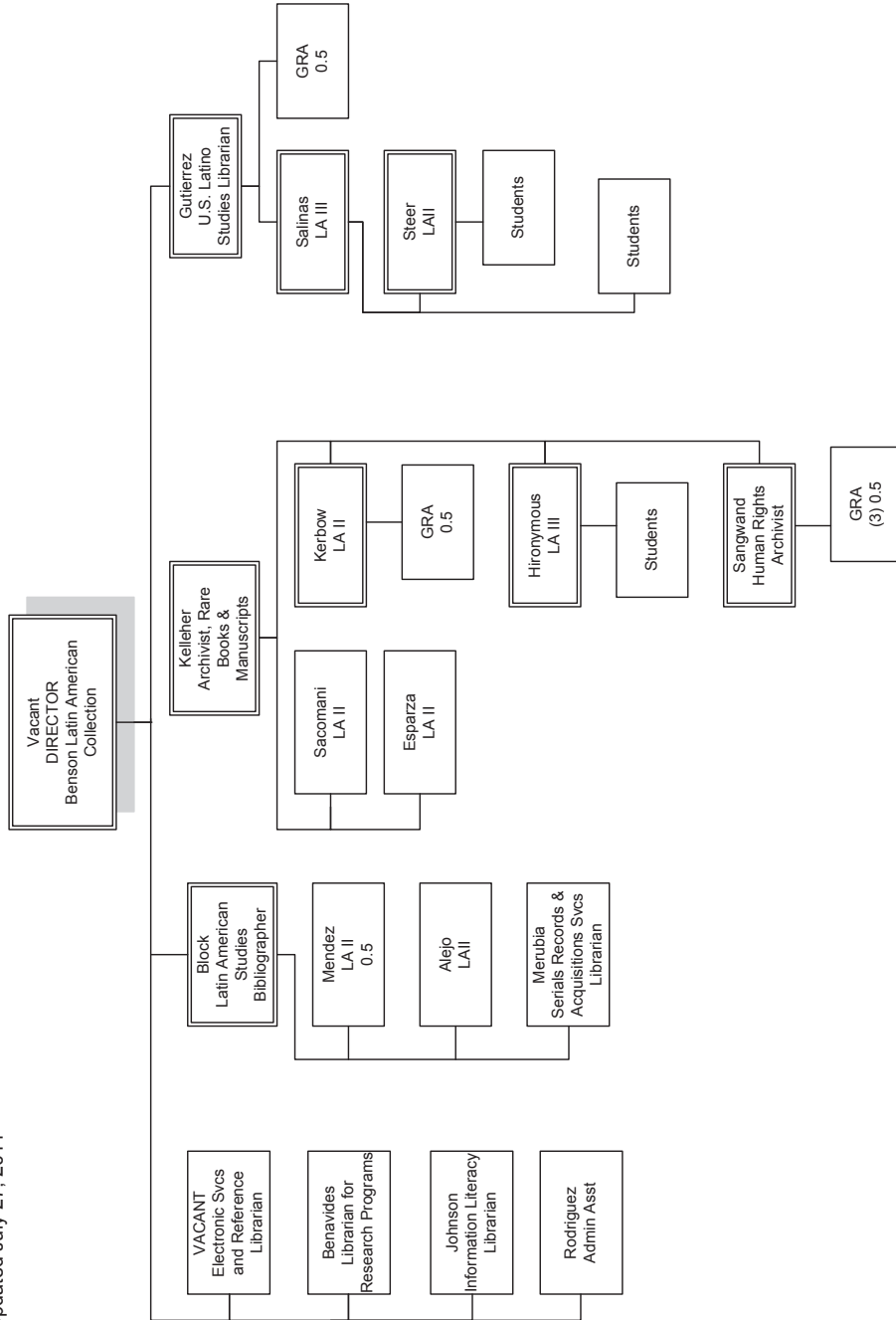
IUB Libraries

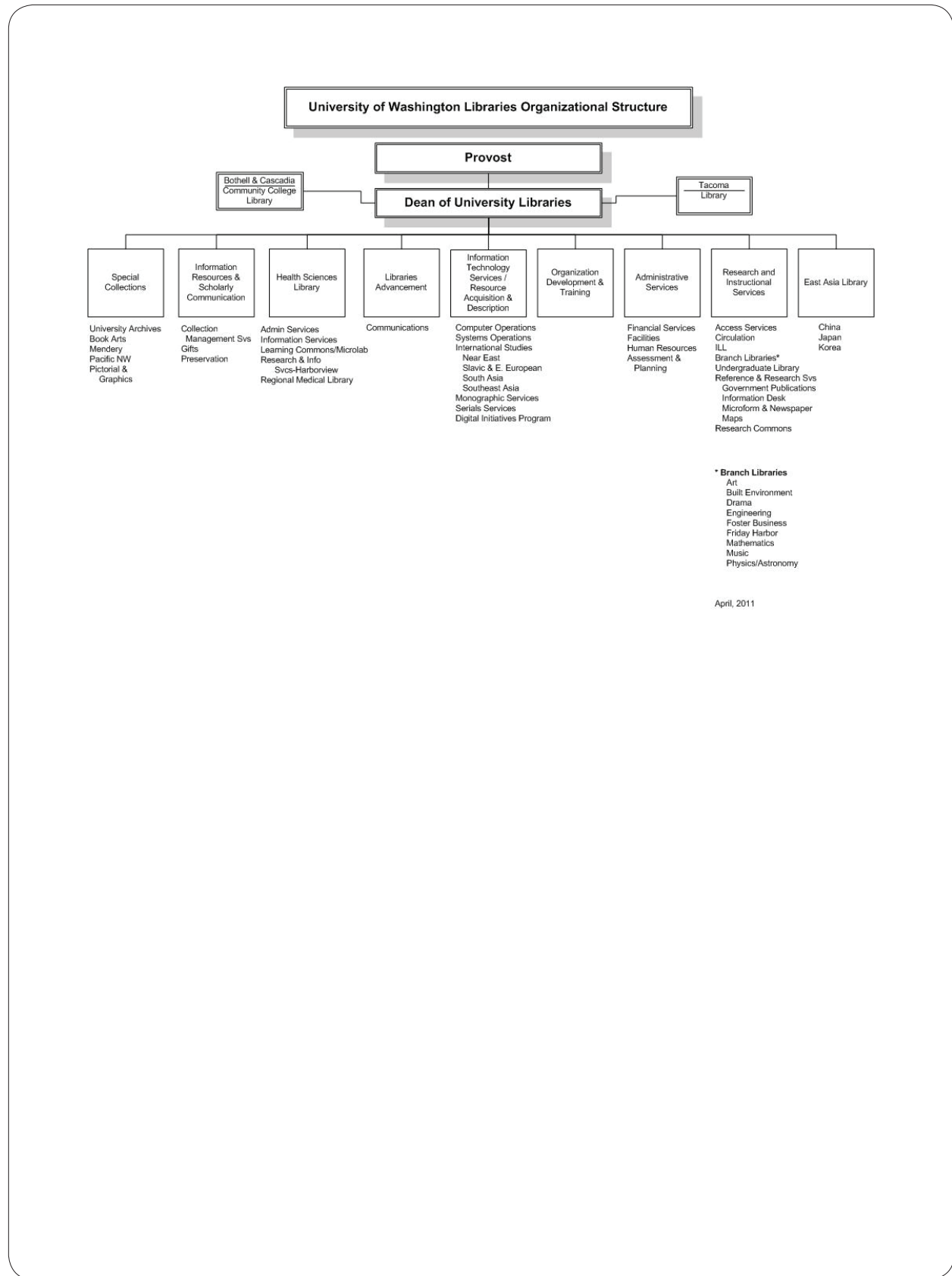
Academic Services - Arts & Humanities, Area Studies, Sciences, and Social Sciences





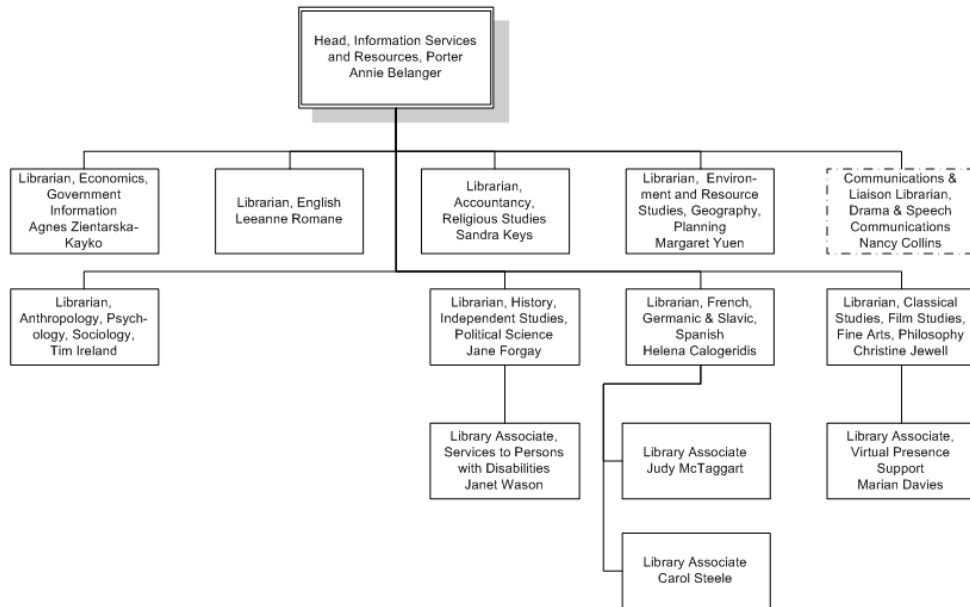
University of Texas Libraries
 Benson Latin American Collection
 Updated July 27, 2011





Library Manuals • Staff Manual
Information Services and Resources, Porter

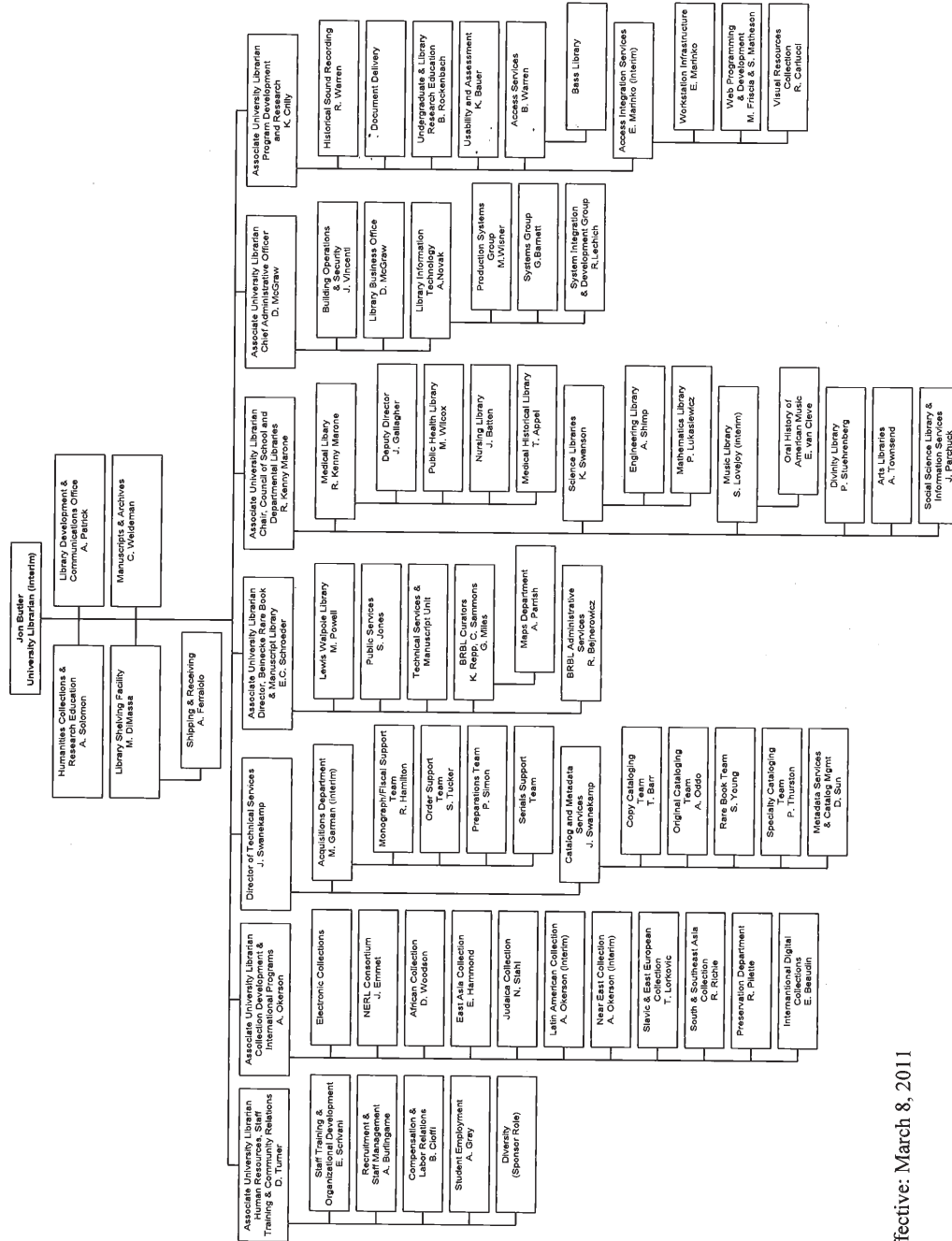
Information Services and Resources, Porter



Feb 2011

[Close this window](#)

YALE UNIVERSITY
Library organization chart



Effective: March 8, 2011