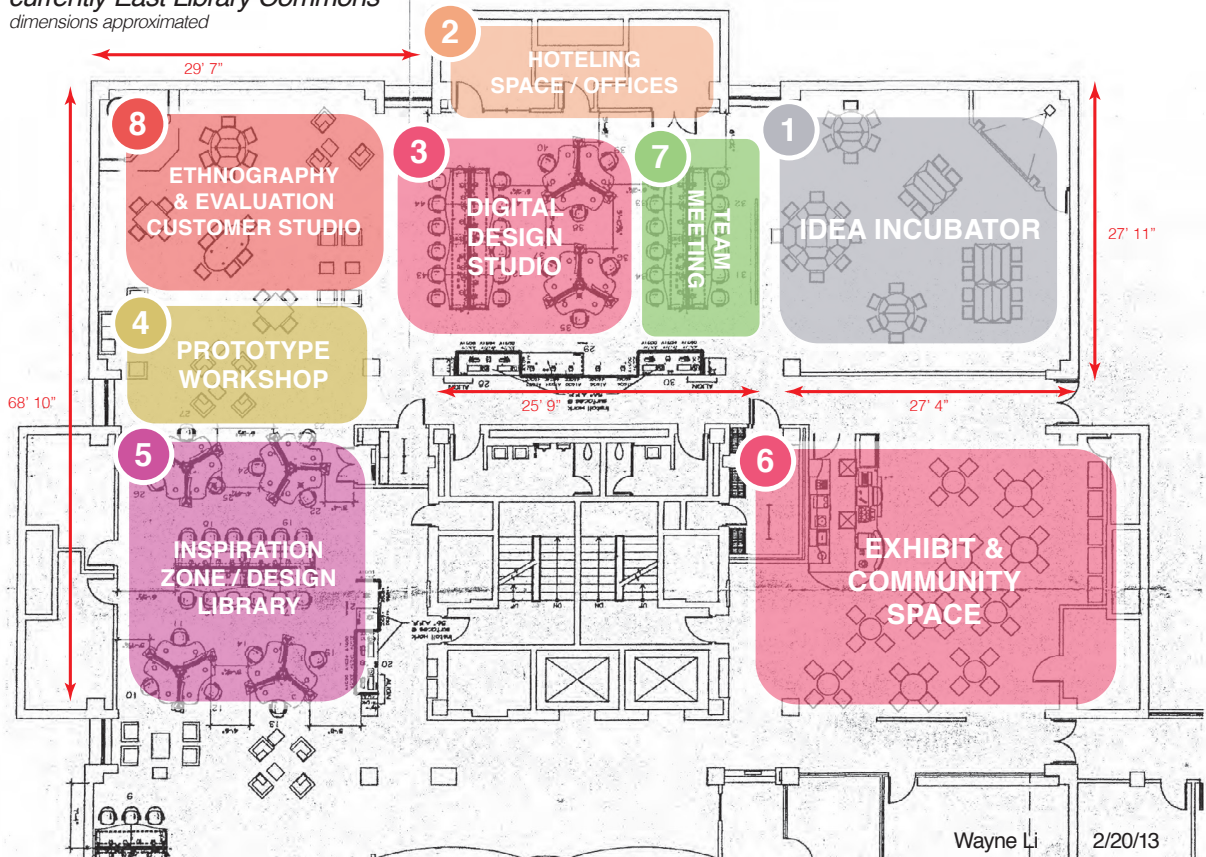


Floor Plans & Maps

Burdell (Oliver) Design Collaborative:

currently East Library Commons

dimensions approximated



NC STATE UNIVERSITY | CAMPUS DIRECTORY | LIBRARIES | MYPACK PORTAL | CAMPUS MAP | SEARCH NCSU.EDU

NCSU LIBRARIES

Search books, articles, journals, website

ASK US | MY ACCOUNT | HOURS | FAQ | LOG OUT | CHAT NOW

[Hunt Library Home](#)
[About Hunt](#)

USING

[Get Books](#)
[Get Help](#)
[Explore Spaces](#)
[Explore Technology](#)
[Reserve a Room](#)

VISITING

[Hours](#)
[Directions and Parking](#)
[Tours](#)
[Photos and Videos](#)

SUPPORT HUNT

[Giving to the Libraries](#)
[Naming Opportunities](#)
[Powered By](#)

CONTACT

[Contact Us](#)
 1070 Partners Way
 Campus Box 7132
 Raleigh, NC 27606
 919-515-7110



Explore Hunt Library Spaces

First Floor

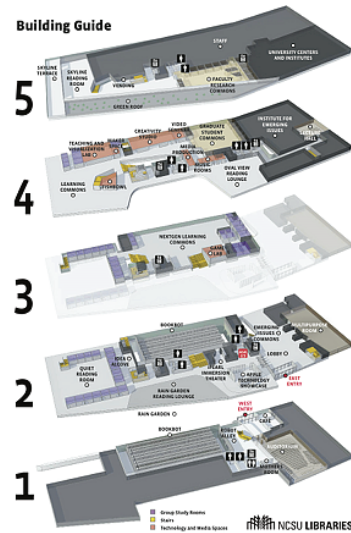
Common Grounds Café
 A convenient spot to meet friends and colleagues for coffee, muffins, sandwiches, or ice cream.

bookBot
 State-of-the-art automated book delivery system with capacity for 2 million volumes. With a click of a button in the library's online catalog, books are retrieved and ready for pickup in only five minutes.

Robot Alley
 Watch the bookBot in action through a glass wall as four robots dart up and down enormous aisles to pinpoint and retrieve materials.

Auditorium
 Featuring a raised stage and seating for 390, this auditorium serves as a university classroom and is a venue for lectures, film screenings, and special performances.

Mothers Room
 Offers a clean, secure, and private space for nursing mothers. The Mothers Room is available during regular library hours on a first-come, first-served basis. For access, please [Ask Us](#).



[View Full-Sized Building Guide \(PDF\)](#)

[Hunt Library Detailed Map \(PDF\)](#)

Second Floor

Emerging Issues Commons
 Interactive exhibits created by the Institute for Emerging Issues, focusing on current challenges facing the economy, the natural and built environments, education, and health.

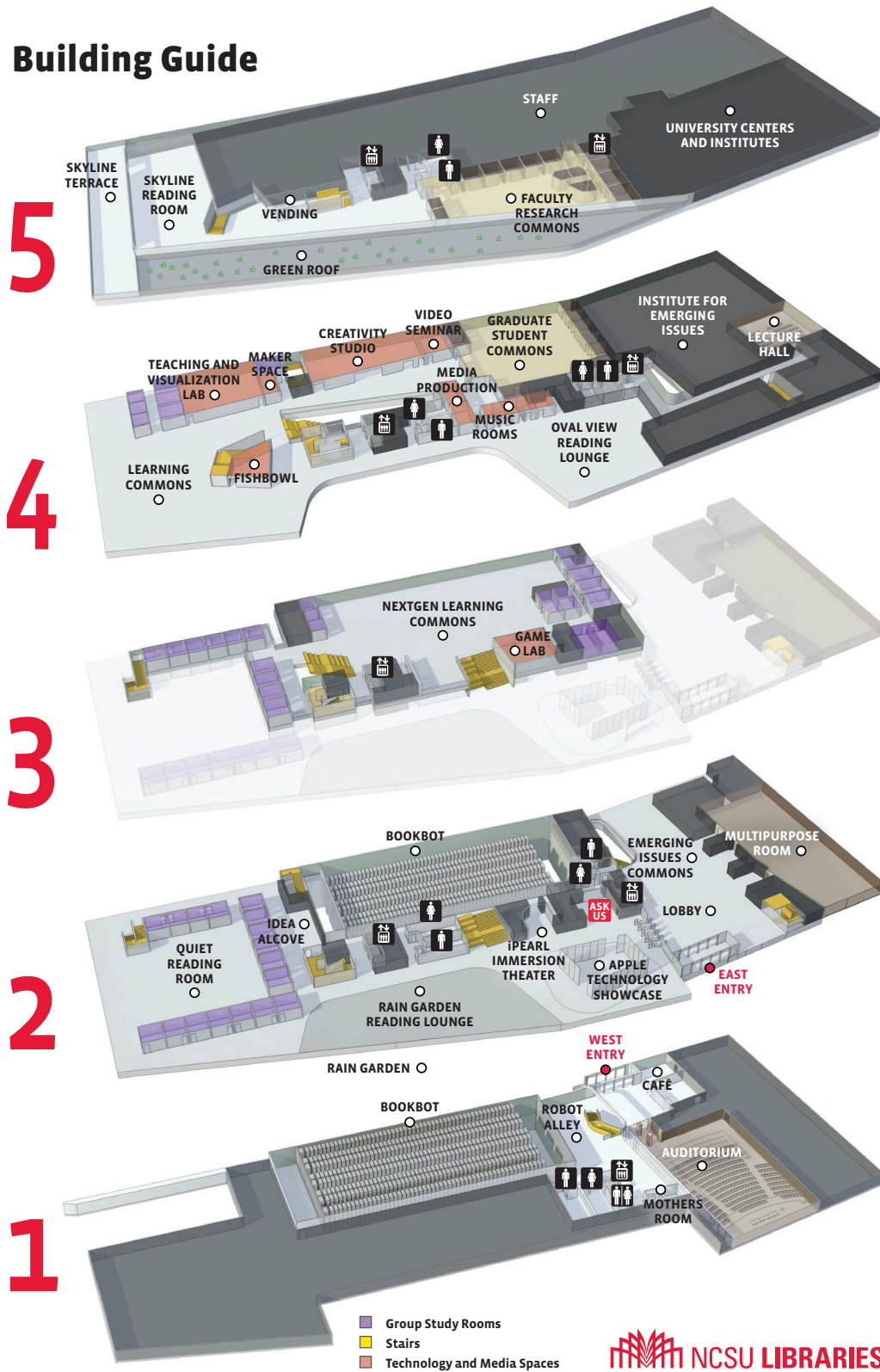
Multipurpose Room
 Meeting and presentation space for the Institute for Emerging Issues.


Ask Us
 The Hunt Library's one-stop service center, where staff are ready to answer questions, help with research, or lend materials, technology, and course reserves.

Apple Technology Showcase
 Surrounded by glass walls, this is the place to see and try out the constantly changing array of devices and technologies available for loan.

iPearl Immersion Theater
 This open area is one of the main attractions on the second floor. A large, curved video display wall surrounds the viewer with imagery, showcasing current events, library and university initiatives, and

Building Guide






chat
is online

Van Pelt-Dietrich Library Center - Floor Plans

- Ground floor
- 1st floor
- 2nd floor
- 3rd floor
- 4th floor
- 5th floor
- 6th floor
- Weigle Information Commons



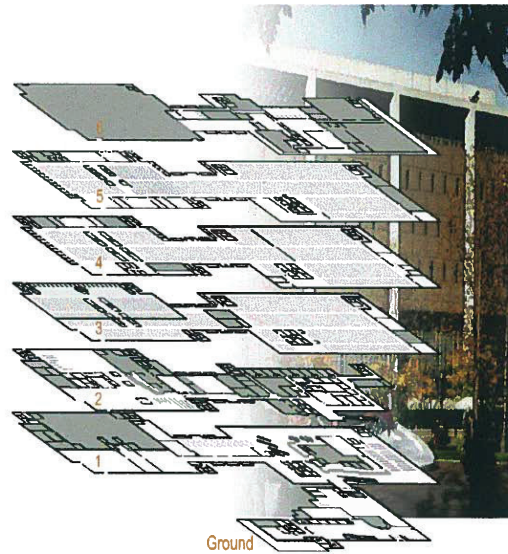
Penn Libraries: Floor Plans

FindIt:

Van Pelt-Dietrich Library Center - Floor Plans

Individual floor plans show:
room names & numbers, stacks (with call number ranges), emergency phones, public & campus phones, look-up computers, PennCash value centers, restrooms, and photocopiers.

- Use the drop down box to select a call number range and subject, then click GO to see a plan of the corresponding floor.
- In the diagram at right, click on any floor to go to the corresponding floor plan.
- On floor plan pages, zoom in by clicking the plan.





chat
is online

**Van Pelt-Dietrich Library
Center - Floor Plans**

- Ground floor
- 1st floor
- 2nd floor
- 3rd floor
- 4th floor
- 5th floor
- 6th floor
- Weigle Information Commons

[Library Home](#) • [Choose a Library](#) • [Ask Us/Get Help](#) • [Site Guide](#) • [Penn](#)

Penn Libraries: Floor Plans

FindIt:

Anywhere

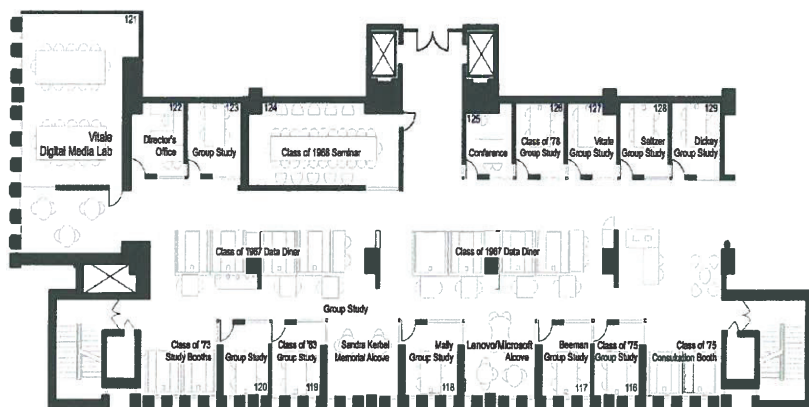
go

David B. Weigle Information Commons

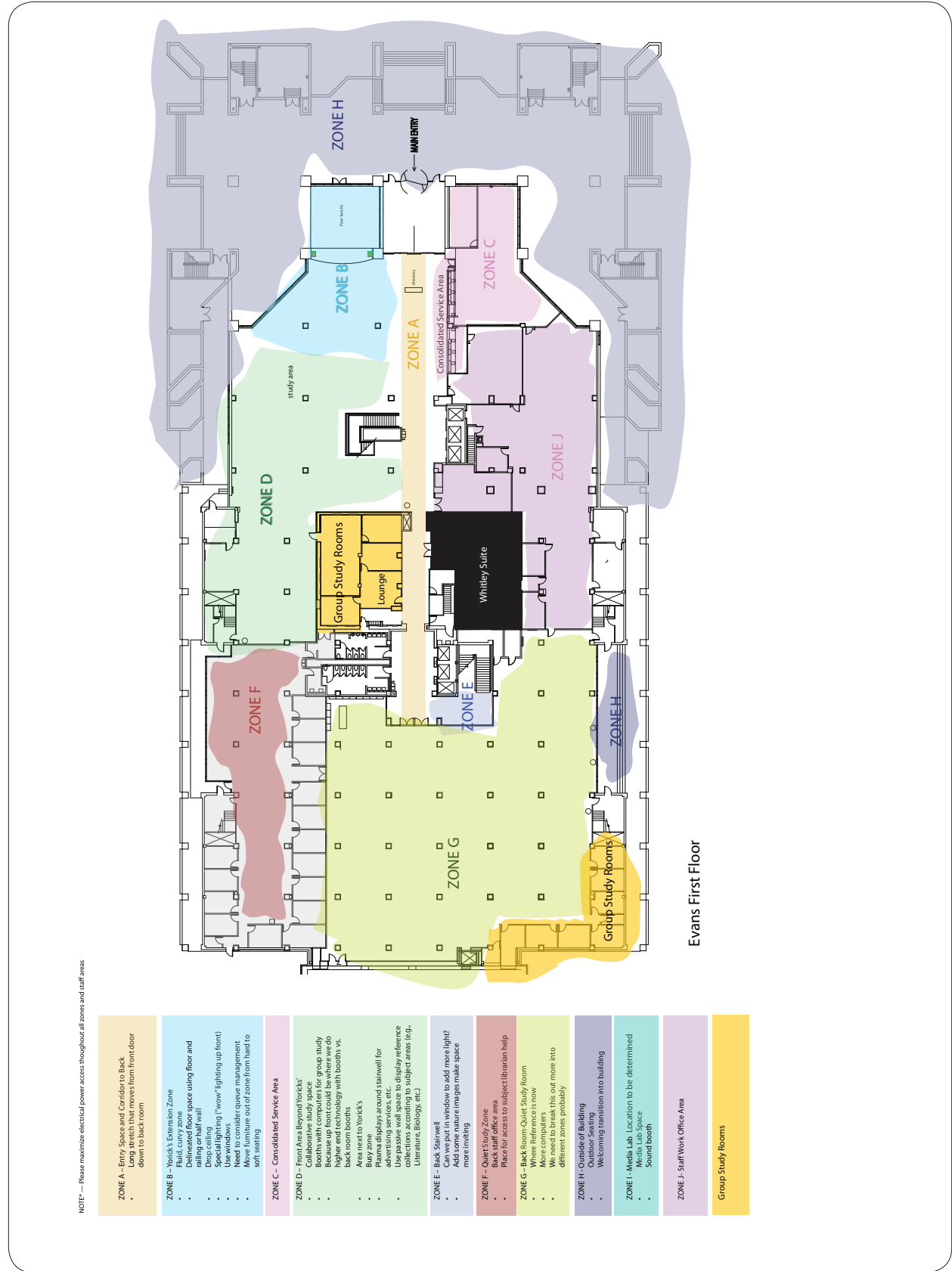
[See the VP-DLC floor plan for your call number and subject]

Go

Click to zoom in



Plan of the Weigle Information Commons



Evans First Floor

NOTE — Please minimize electrical power access throughout all zones and staff areas

- ZONE A - Entry Space and Corridor to Back**
 - Long stretch that moves from front door down to back room
- ZONE B - Yorick's Extension Zone**
 - Built carry zone
 - Drop ceiling to create space using floor and railing on half wall
 - Drop ceiling
 - Special lighting ("wow" lighting up front)
 - Use windows for queue management
 - Move furniture out of zone from hard to soft seating
- ZONE C - Consolidated Service Area**
- ZONE D - First Area Beyond Yorick's' collaborative study space**
 - Booths with computers for group study
 - Because up front could be where we do higher end technology with booths vs. back room booths
 - Away from Yorick's
 - Plasma displays around stairwell for advertising services, etc.
 - Use passive wall space to display reference material to subject areas (e.g., Literature, Biology, etc.)
- ZONE E - Back Stairwell**
 - Can we put in window to add more light?
 - Can we put in window that we images make space more inviting
- ZONE F - Quiet Study Zone**
 - Back staff office area
 - Place for access to subject librarian help
- ZONE G - Back Room Quiet Study Room**
 - Where reference is now
 - More computers
 - More desks, this one more into different zones probably
- ZONE H - Outside of Building**
 - Outdoor seating
 - Welcoming invitation into building
- ZONE I - Media Lab** Location to be determined
 - Media Lab Space
 - Sound Booth
- ZONE J - Staff Office Area**
- Group Study Rooms**

UNIVERSITY LIBRARIES
UNIVERSITY of WASHINGTON
Research Commons

ask us!
email | chat | phone | text

UW HOME | DIRECTORIES | CALENDAR | LIBRARIES | MAPS | MY UW

HOME | ABOUT | RESOURCES | GET HELP HERE | NEWS & EVENTS | SCHOLARS' STUDIO | OOLAB

Hours and Map
Reserve a Collaboration Space

Home / Resources

Explore the Commons

Map of resources in the Research Commons

Hover over outlined areas to see resource details.

- Resources
- Reserve a Collaboration Space
- Today's Reservations
- Rooms
- Booths
- Collaboration Screen Spaces
- Whiteboard Spaces
- Help Desk
- Equipment



[Send this](#)